

RNAV (RNP) Z RWY 28L

JOHN GLENN COLUMBUS INTL (CMH)

APP CRS 281°	Rwy Idg 10113
	TDZE 815
	Apt Elev 815



For uncompensated Baro-VNAV systems, procedure NA below -18°C (0°F) or above 54°C (130°F). GPS required. For inoperative ALS, increase RNP 0.17 all Cats visibility to RVR 4600, increase RNP 0.30 all Cats visibility to 1 1/2 SM. Simultaneous approach authorized. Use of FD or AP providing RNAV track guidance required during simultaneous operations.

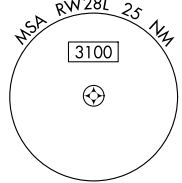
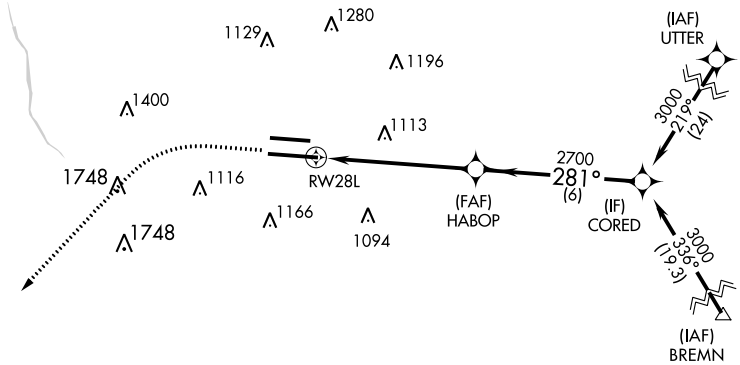
MALSR



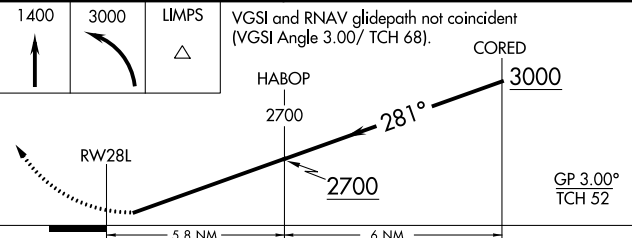
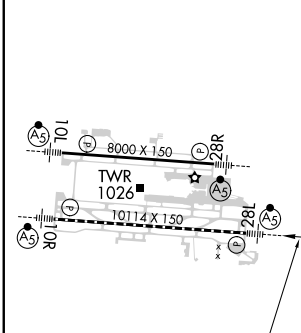
MISSED APPROACH:
Climb to 1400 then climbing left turn to 3000 direct LIMPS and hold.

D-ATIS 124.6	COLUMBUS APP CON 125.95 371.975	COLUMBUS TOWER 132.7 257.8	GND CON 121.9 348.6	CLNC DEL 126.3	CPDLC
------------------------	---	---	-------------------------------	--------------------------	-------

Procedure NA for arrivals at BREMN on V45 southbound.



ELEV 815	D	TDZE 815
----------	----------	----------



CATEGORY	A	B	C	D
RNP 0.17 DA		1105/40	290 (300-3/4)	
RNP 0.30 DA		1295/60	480 (500-1 1/4)	

TDZ/CL Rwy 10R-28L
HIRL Rwy 10R-28L and 10L-28R

AUTHORIZATION REQUIRED

EC-2, 25 FEB 2021 to 25 MAR 2021

EC-2, 25 FEB 2021 to 25 MAR 2021