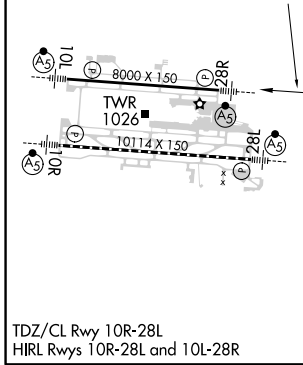
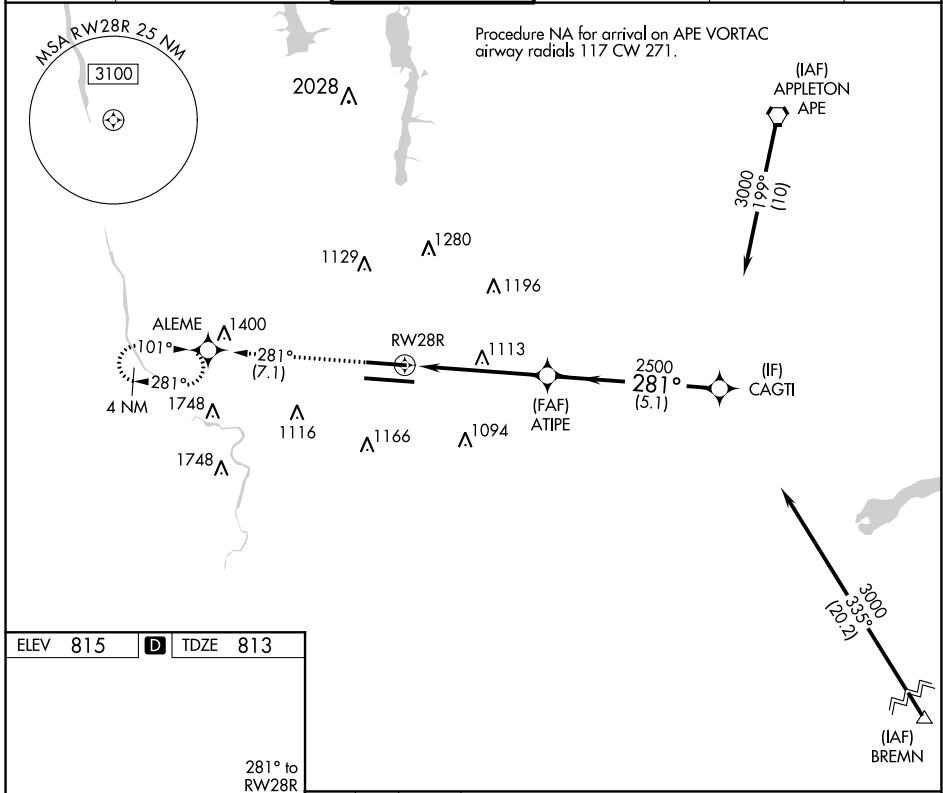


APP CRS 281°	Rwy Idg 8000
	TDZE 813
	Apt Elev 815

RNAV (RNP) Z RWY 28R

JOHN GLENN COLUMBUS INTL (CMH)

<p>▼ For uncompensated Baro-VNAV systems, procedure NA below -18°C (0°F) or above 54°C (130°F). GPS required. Use of FD or AP providing RNAV track guidance required during simultaneous operations. For inoperative ALS, increase RNP 0.16 all Cats visibility to RVR 6000 and RNP 0.30 all Cats visibility to 1% SM. Simultaneous approach authorized.</p>				<p>MALSR</p>	<p>MISSED APPROACH: Climb to 2800 on track 281° to ALEME and hold.</p>
D-ATIS 124.6	COLUMBUS APP CON 125.95 371.975	COLUMBUS TOWER 132.7 257.8	GND CON 121.9 348.6	CLNC DEL 126.3	CPDLC



ELEV 815	D	TDZE 813		
<p>281° to RW28R</p> <p>2800 tr 281°</p> <p>ALEME</p>				
<p>CAGTI</p> <p>3000</p> <p>ATIPE</p> <p>2500</p> <p>RW28R</p> <p>2500</p> <p>5.1 NM</p> <p>5.1 NM</p> <p>GP 3.00° TCH 50</p>				
CATEGORY	A	B	C	D
RNP 0.16 DA	1167/50		354 (400-1)	
RNP 0.30 DA	1224/50		411 (500-1)	

AUTHORIZATION REQUIRED

EC-2, 25 FEB 2021 to 25 MAR 2021

EC-2, 25 FEB 2021 to 25 MAR 2021