


WAAS CH <b>40299</b> <b>W10B</b>	APP CRS <b>101°</b>	Rwy Idg TDZE Apt Elev	<b>8000</b> <b>815</b> <b>815</b>
--	------------------------	-----------------------------	---

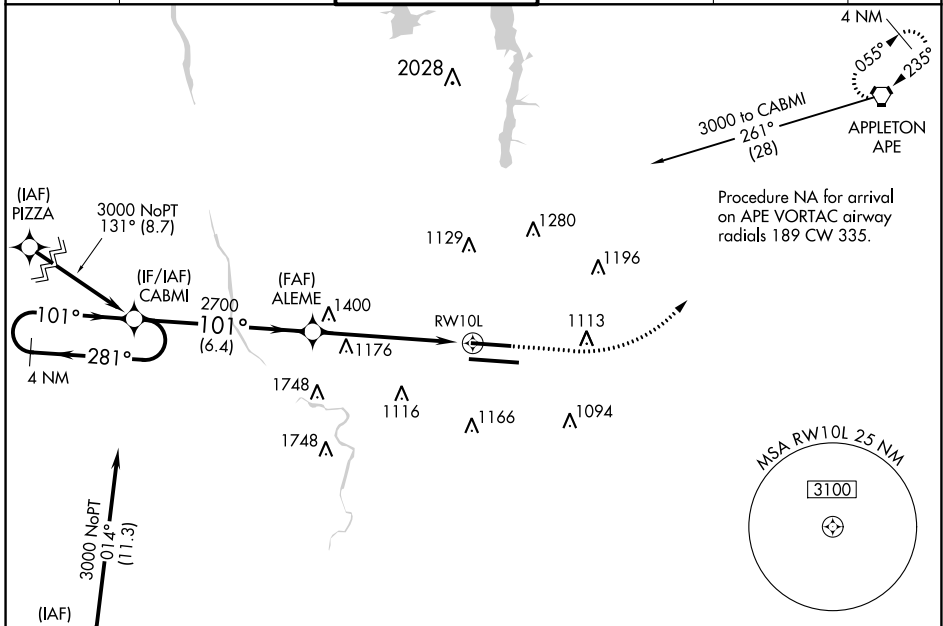
# RNAV (GPS) Y RWY 10L

JOHN GLENN COLUMBUS INTL (CMH)

**⚠** For uncompensated Baro-VNAV systems, LNAV/VNAV NA below -18°C (0°F) or above 54°C (130°F). DME/DME RNP-0.3 NA. LNAV procedure NA during simultaneous operations. Use of FD or AP providing RNAV track guidance required during simultaneous operations. Simultaneous approach authorized. \*\* RVR 1800 authorized with use of FD or AP or HUD to DA.

**MALSR**  
 MISSED APPROACH: Climb to 1400 then climbing left turn to 3000 direct APE VORTAC and hold.

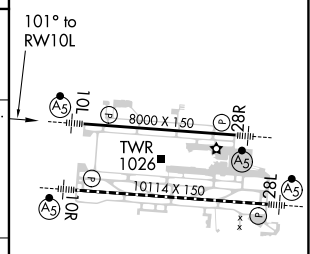
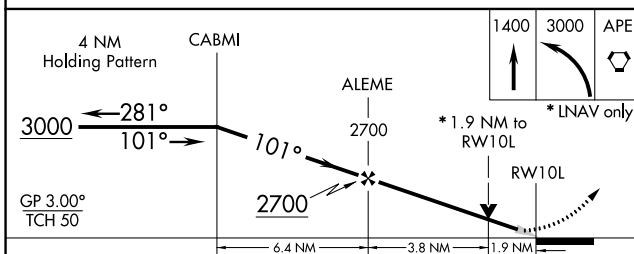
D-ATIS <b>124.6</b>	COLUMBUS APP CON <b>125.95 371.975</b>	COLUMBUS TOWER <b>132.7 257.8</b>	GND CON <b>121.9 348.6</b>	CLNC DEL <b>126.3</b>	CPDLC
------------------------	---	--------------------------------------	-------------------------------	--------------------------	-------



EC-2, 25 FEB 2021 to 25 MAR 2021

EC-2, 25 FEB 2021 to 25 MAR 2021

ELEV 815	<b>D</b> TDZE 815
----------	-------------------



CATEGORY	A	B	C	D
LPV DA**		1015/24	200 (200-½)	
LNAV/VNAV DA		1199/40	384 (400-¾)	
LNAV MDA	1480/24	665 (700-½)	1480-1½	665 (700-1½)
<b>C</b> CIRCLING	1480-1	665 (700-1)	1520-2 705 (800-2)	1540-2¼ 725 (800-2¼)

TDZ/CL Rwy 10R-28L  
HIRL Rwy 10R-28L and 10L-28R