


WAAS CH <b>99603</b> <b>W10A</b>	APP CRS <b>101°</b>	Rwy Idg TDZE <b>809</b> Apt Elev <b>815</b>	<b>10113</b>
--	------------------------	---	--------------

# RNAV (GPS) Y RWY 10R

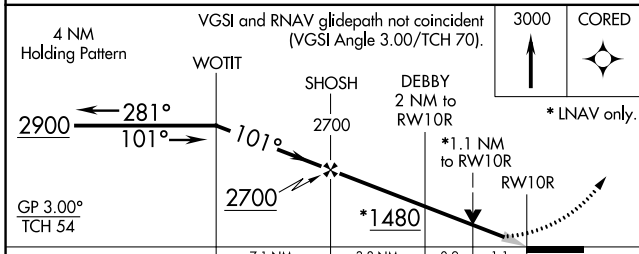
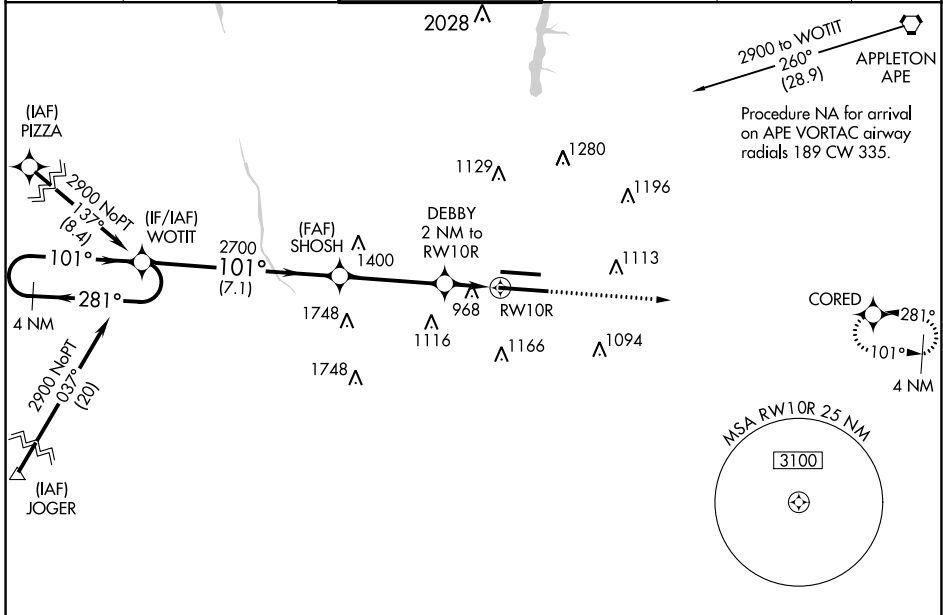
JOHN GLENN COLUMBUS INTL (CMH)

**⚠** For uncompensated Baro-VNAV systems, LNAV/VNAV NA below -18°C (0°F) or above 54°C (130°F). DME/DME RNP-0.3 NA. LNAV procedure NA during simultaneous operations. Use of FD or AP providing RNAV track guidance required during simultaneous operations. Simultaneous approach authorized.

MALSR 

MISSED APPROACH: Climb to 3000 direct CORED and hold.

D-ATIS <b>124.6</b>	COLUMBUS APP CON <b>125.95 371.975</b>	COLUMBUS TOWER <b>132.7 257.8</b>	GND CON <b>121.9 348.6</b>	CLNC DEL <b>126.3</b>	CPDLC
------------------------	---	--------------------------------------	-------------------------------	--------------------------	-------



ELEV 815	<b>D</b> TDZE 809
----------	-------------------

TWR 1026

101° to RWY10R

TDZ/CL Rwy 10R-28L  
HIRL Rwy 10R-28L and 10L-28R

CATEGORY	A	B	C	D
LPV DA		1009/18	200 (200-½)	
LNAV/VNAV DA		1273/55	464 (500-1)	
LNAV MDA	1220/24	411 (500-½)	1220/40	411 (500-¾)
<b>C</b> CIRCLING	1340-1	525 (600-1)	1520-2 705 (800-2)	1540-2¼ 725 (800-2¼)