

WAAS CH 48999 W28A	APP CRS 281°	Rwy Idg TDZE Apt Elev	10113 815 815
--	------------------------	-----------------------------	--

RNAV (GPS) Y RWY 28L

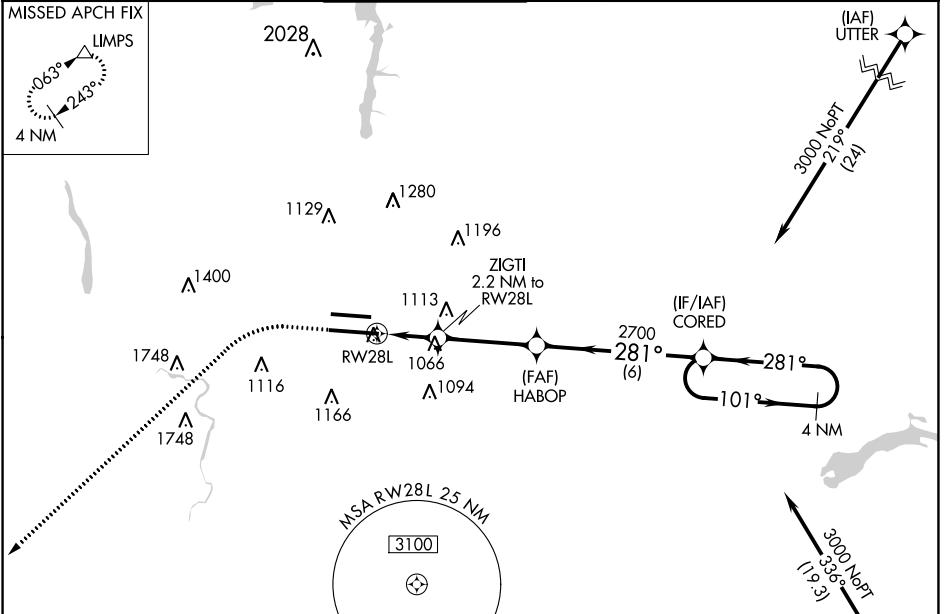
JOHN GLENN COLUMBUS INTL (CMH)

⚠ For uncompensated Baro-VNAV systems, LNAV/VNAV NA below -18°C (0°F) or above 54°C (130°F). Simultaneous approach authorized. DME/DME RNP-0.3 NA. LNAV procedure NA during simultaneous operations. Use of FD or AP providing RNAV track guidance required during simultaneous operations.

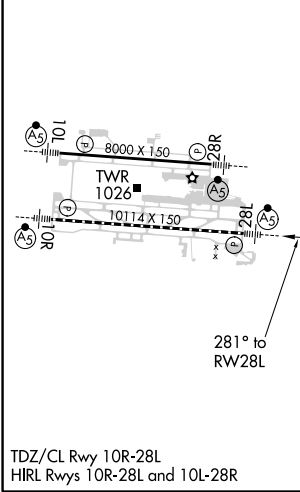


MISSED APPROACH: Climb to 1400 then climbing left turn to 3000 direct LIMPS and hold.

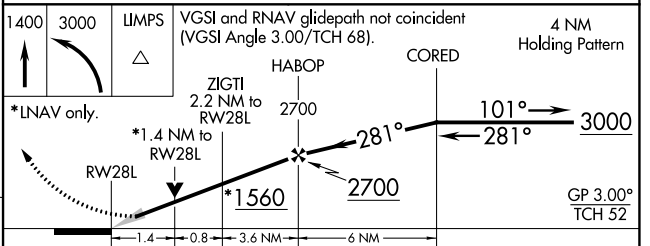
D-ATIS 124.6	COLUMBUS APP CON 125.95 371.975	COLUMBUS TOWER 132.7 257.8	GND CON 121.9 348.6	CLNC DEL 126.3	CPDLC
------------------------	---	--------------------------------------	-------------------------------	--------------------------	-------



ELEV 815	D	TDZE 815
----------	----------	----------



Procedure NA for arrivals at BREMN on V45 southbound.



CATEGORY	A	B	C	D
LPV DA	DA	1015/18	200 (200-½)	
LNAV/VNAV DA	DA	1261/55	446 (500-1)	
LNAV MDA	1320/24	505 (600-½)	1320/55	505 (600-1)
C CIRCLING	1340-1	525 (600-1)	1520-2 705 (800-2)	1540-2¾ 725 (800-2¾)