


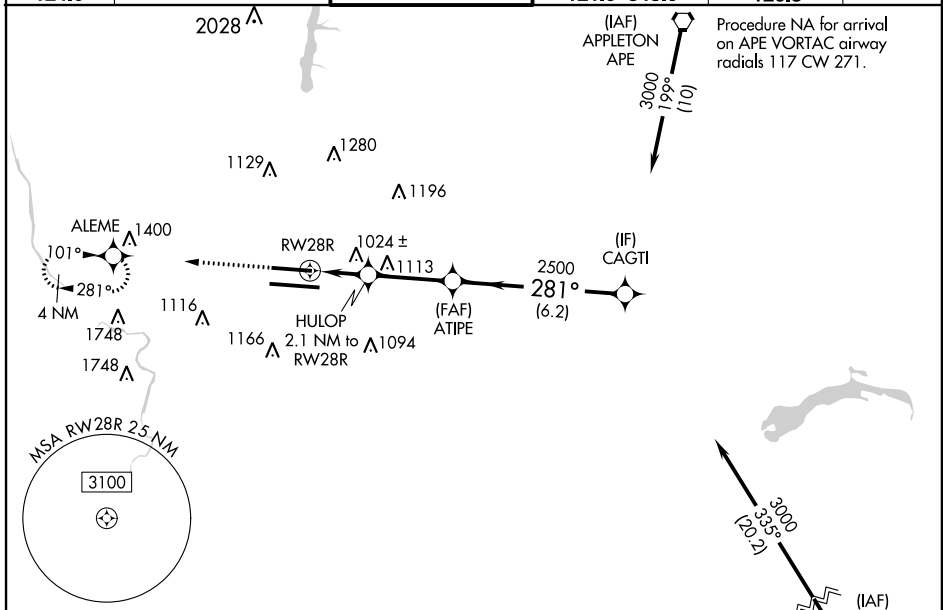
WAAS CH 86619 W28B	APP CRS 281°	Rwy Idg TDZE Apt Elev	8000 813 815
--	------------------------	-----------------------------	---

RNAV (GPS) Y RWY 28R

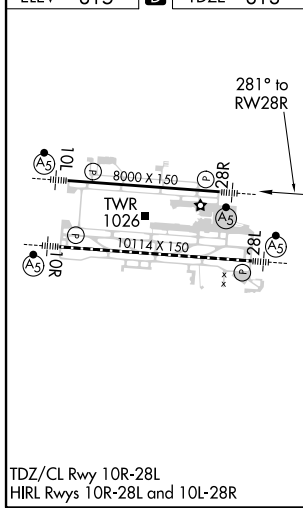
JOHN GLENN COLUMBUS INTL (CMH)

<p>⚠ For uncompensated Baro-VNAV systems, LNAV/VNAV NA below -18°C (0°F) or above 54°C (130°F). Simultaneous approach authorized. DME/DME RNP-0.3 NA. LNAV procedure NA during simultaneous operations. Use of FD or AP providing RNAV track guidance required during simultaneous operations. For inoperative ALS, increase LNAV/VNAV all Cats visibility to RVR 4500; increase LNAV Cat C/D visibility to 1$\frac{1}{2}$ SM.</p>	<p>MALSR</p> 	<p>MISSED APPROACH: Climb to 2800 direct ALEME and hold.</p>
	<p>Procedure NA for arrival on APE VORTAC airway radials 117 CW 271.</p>	

D-ATIS 124.6	COLUMBUS APP CON 125.95 371.975	COLUMBUS TOWER 132.7 257.8	GND CON 121.9 348.6	CLNC DEL 126.3	CPDLC
------------------------	---	--------------------------------------	-------------------------------	--------------------------	-------



ELEV 815	D	TDZE 813
----------	----------	----------



<p>2800 ALEME</p> <p>*LNAV only.</p> <p>HULOP 2.1 NM to RWY 28R</p> <p>ATIPE 2500</p> <p>CAGTI 3000</p> <p>281°</p> <p>1520*</p> <p>GP 3.00° TCH 50</p>	<p>1.3 NM</p> <p>0.8 NM</p> <p>3 NM</p> <p>6.2 NM</p>			
CATEGORY	A	B	C	D
LPV DA	1018/24 205 (300- $\frac{1}{2}$)			
LNAV/VNAV DA	1122/24 309 (400- $\frac{1}{2}$)			
LNAV MDA	1280/24	467 (500- $\frac{1}{2}$)	1280/50	467 (500-1)
C CIRCLING	1340-1	525 (600-1)	1520-2 705 (800-2)	1520-2 $\frac{1}{4}$ 705 (800-2 $\frac{1}{4}$)

EC-2, 25 FEB 2021 to 25 MAR 2021

EC-2, 25 FEB 2021 to 25 MAR 2021