

WAAS CH <b>93642</b> <b>W03A</b>	APP CRS <b>044°</b>	Rwy Idg <b>6301</b> TDZE <b>4558</b> Apt Elev <b>4590</b>
--	------------------------	---

# RNAV (GPS) RWY 3

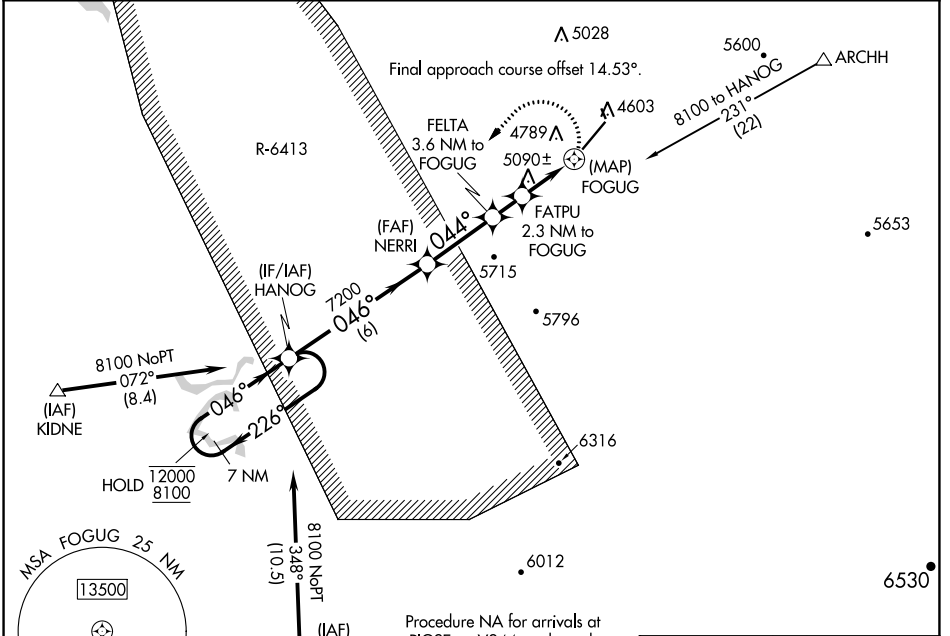
CANYONLANDS RGNL (CNY)

RNP APCH.

**NA** Circling NA to Rwys 15 and 33. Rwy 3 helicopter visibility reduction below 3/4 SM NA. Procedure NA when R-6413 in operation.

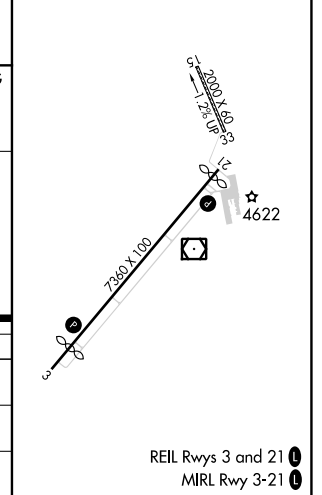
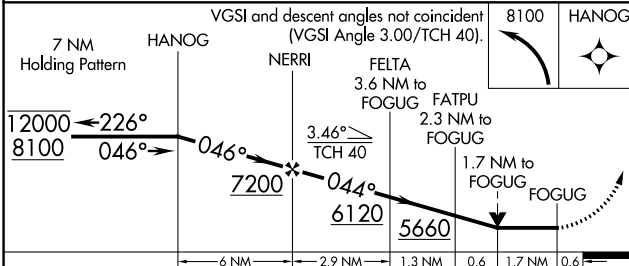
MISSED APPROACH: Climbing left turn to 8100 direct HANOG and hold, continue climb-in-hold to 8100.

ASOS <b>118.525</b>	DENVER CENTER <b>134.5 327.8</b>	UNICOM <b>122.8 (CTAF)</b>
------------------------	-------------------------------------	-------------------------------



Procedure NA for arrivals at PIGSE on V244 eastbound.

ELEV 4590	<b>D</b> TDZE 4558
-----------	--------------------



CATEGORY	A	B	C	D
LP MDA	5340-1 782 (800-1)	5340-1½ 782 (800-1¼)	5340-2½	782 (800-2½)
LNAV MDA	5340-1 782 (800-1)	5340-1½ 782 (800-1¼)	5340-2½	782 (800-2½)
<b>C</b> CIRCLING	5660-1 1070 (1100-1)	5660-1½ 1070 (1100-1¼)	5720-3 1130 (1200-3)	6220-3 1630 (1700-3)

REIL Rwys 3 and 21  
MIRL Rwy 3-21

SW-4, 25 FEB 2021 to 25 MAR 2021

SW-4, 25 FEB 2021 to 25 MAR 2021