

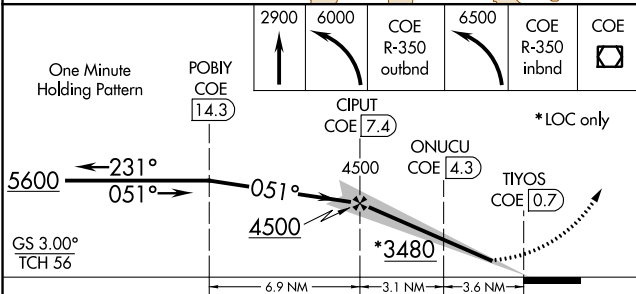
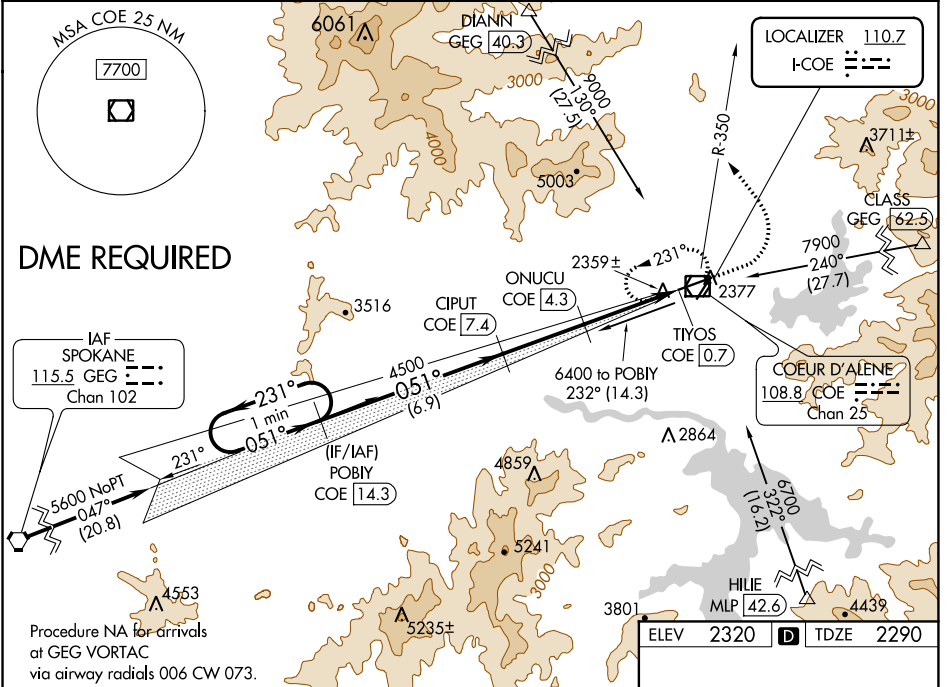
LOC I-COE	APP CRS	Rwy Idg	7400
110.7	051°	TDZE	2290
		Apt Elev	2320

ILS or LOC/DME RWY 6

COEUR D'ALENE-PAPPY BOYINGTON FIELD (COE)

<p>⚠ DME from COE VOR/DME. Simultaneous reception of I-COE and COE DME required. Autopilot coupled approach NA below 2840. When local altimeter setting not received, use Spokane Intl altimeter setting and increase all DA/MDA 80 feet and all visibilities ¼ mile. Circling Rwy 2, NA at night.</p>	<p>MALSR</p>	<p>MISSED APPROACH: Climb to 2900 then climbing left turn to 6000 via COE R-350 outbound then climbing left turn to 6500 via COE R-350 inbound to COE VOR/DME and hold.</p>
---	---------------------	--

AWOS-3PT 135.075	SPOKANE APP CON 132.1 263.0	UNICOM 122.8 (CTAF)
----------------------------	---------------------------------------	-------------------------------



CATEGORY	A	B	C	D
S-ILS 6	2490-1/2 200 (200-1/2)			
S-LOC 6	2860-1/2	570 (600-1/2)	2860-1 570 (600-1)	2860-1 1/4 570 (600-1 1/4)
CIRCLING	2860-1	540 (600-1)	2880-1 1/2 560 (600-1 1/2)	2880-2 560 (600-2)

ELEV 2320	D	TDZE 2290
-----------	----------	-----------

MIRL Rwy 2-20
HIRL Rwy 6-24
REIL Rws 2 and 24

NW-1, 25 FEB 2021 to 25 MAR 2021

NW-1, 25 FEB 2021 to 25 MAR 2021