

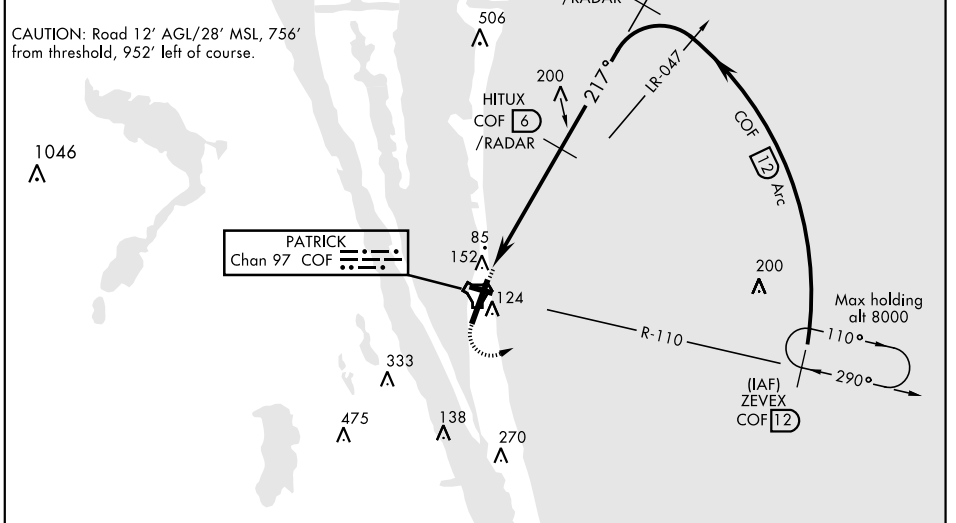
# TACAN RWY 21

TACAN COF Chan <b>97</b>	APCH CRS <b>217°</b>	Rwy ldg TDZE Arprt Elev <b>9003</b> <b>8</b> <b>8</b>	AL-38 [USAF]	PATRICK AFB (KCOF)
-----------------------------	-------------------------	--	--------------	--------------------

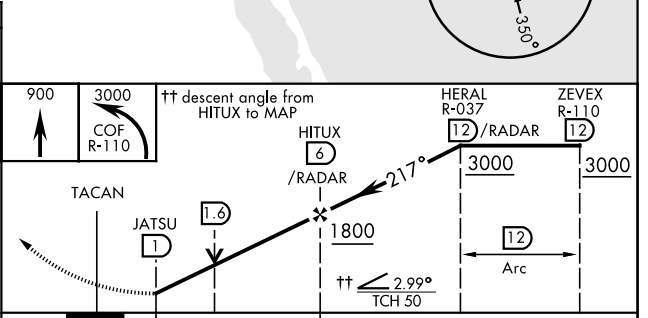
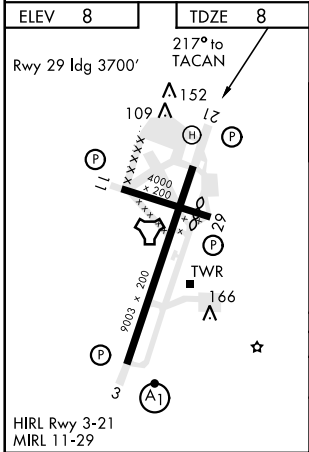
▼ \* When Rwy 29 VGSI inop, circling to Rwy 29 NA at night. Circling not authorized W of Rwy 3-21.  
 † MISSED APPROACH: Climb to 900, then climbing left turn to 3000, intercept the COF R-110 outbound to ZEVEX and hold, continue climb in hold to 3000.

ATIS * <b>119.175 273.5</b>	ORLANDO APP CON <b>132.65 281.425</b>	PATRICK TOWER * <b>133.75 269.375</b>	GND CON <b>124.35 335.8</b>	CLNC DEL <b>118.4 289.4</b>
--------------------------------	--	--	--------------------------------	--------------------------------

\*\* When VGSI inop, procedure NA at night. USAF only: When VGSI inop, straight-in Rwy 21 authorized at night with MAJCOM A3 approval.  
 † Missed approach requires use of RNAV or ATC RADAR monitoring.



EMERG SAFE ALT 100 NM 3000



CATEGORY	A	B	C	D	E
S-21*	420/55	412 (500-1)	420/60	412 (500-1½)	
CIRCLING**	480-1	500-1	500-1½	560-2	600-2
	472 (500-1)	492 (500-1)	492 (500-1½)	552 (600-2)	592 (600-2)

# TACAN RWY 21

SE-3, 25 FEB 2021 to 25 MAR 2021

SE-3, 25 FEB 2021 to 25 MAR 2021