


WAAS Ch <b>90112</b> <b>W35A</b>	APP CRS <b>351°</b>	Rwy Idg TDZE <b>336</b> Apt Elev <b>342</b>
--	------------------------	---

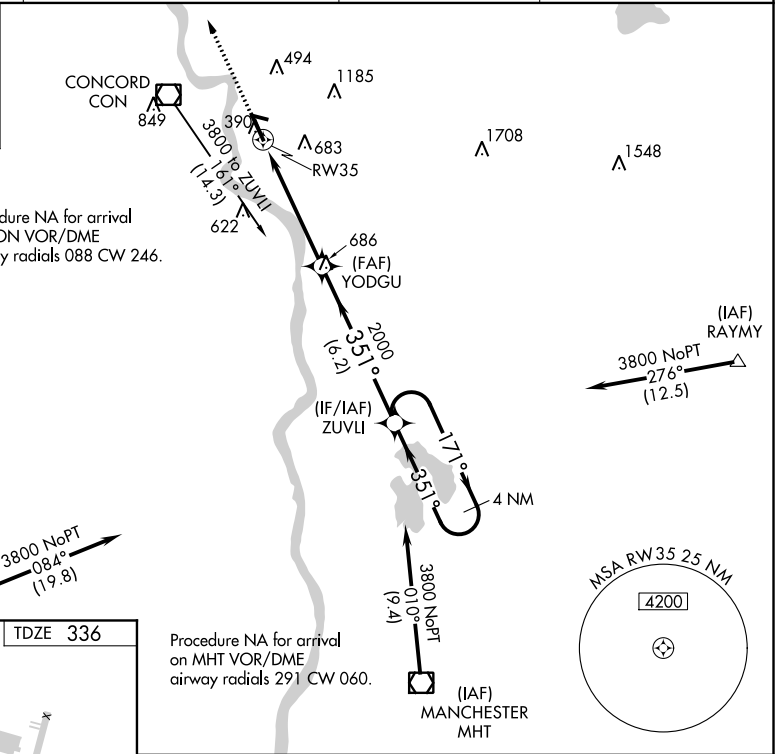
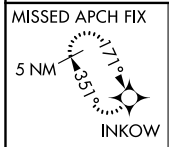
# RNAV (GPS) RWY 35

CONCORD MUNI (CON)

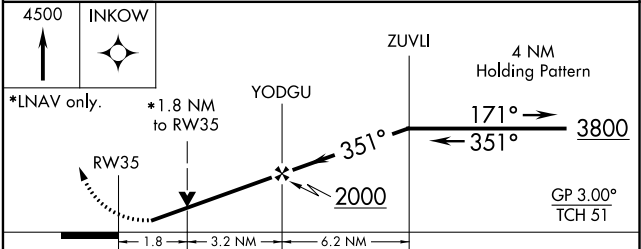
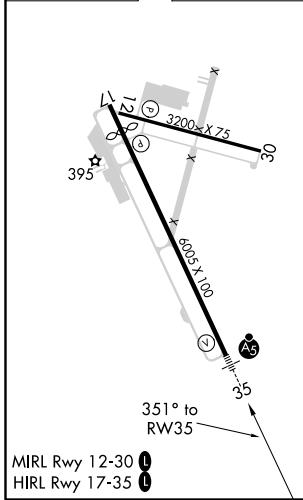
**⚠** Circling Rwy 12/17/30 NA at night. DME/DME RNP-0.3 NA.  
**⚠** Rwy 35 helicopter visibility reduction below 3/4 SM NA. Rwy 12/17/30 helicopter visibility reduction below 1 SM NA. For inop MALSR, increase LPV all Cats visibility to 1 1/4 SM, increase LNAV Cats A/B to 1 SM.

**MALSR**  
  
**MISSED APPROACH:**  
 Climb to 4500 direct INKOW and hold.

ASOS <b>132.325</b>	BOSTON APP CON <b>127.35 269.075</b>	CLNC DEL <b>133.65</b>	UNICOM <b>122.7 (CTAF) 0</b>
------------------------	---	---------------------------	---------------------------------



ELEV 342	TDZE 336
----------	----------



CATEGORY	A	B	C	D
LPV DA	673-3/4 337 (400-3/4)			
LNAV MDA	940-3/4	604 (600-3/4)	940-1 1/4 604 (600-1 1/4)	940-1 1/2 604 (600-1 1/2)
CIRCLING	940-1 598 (600-1)	1020-1 678 (700-1)	1020-2 678 (700-2)	1220-2 3/4 878 (900-2 3/4)

NE-1, 25 FEB 2021 to 25 MAR 2021

NE-1, 25 FEB 2021 to 25 MAR 2021