

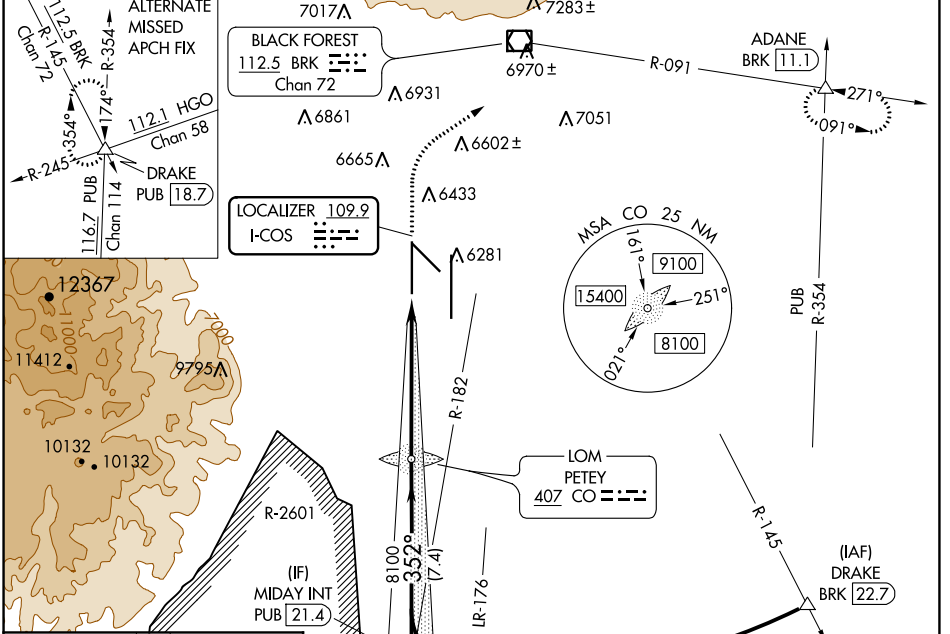
LOC I-COS 109.9	APP CRS 352°	Rwy ldg TDZE Apt Elev	11022 6075 6187
---------------------------	------------------------	-----------------------------	--

ILS RWY 35L (SA CAT II)

CITY OF COLORADO SPRINGS MUNI (COS)

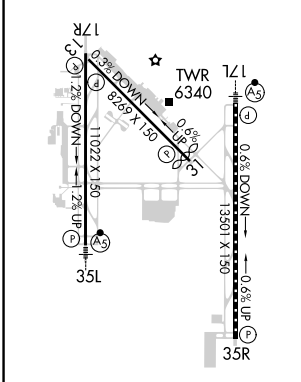
<p>RADAR monitoring required when R-2601 in use. Reduced lighting; requires specific OPSPEC, MSPEC, or LOA approval and use of autoland or HUD to touchdown.</p>	<p>MALSIR</p>	<p>MISSED APPROACH: Climb to 6700 then climbing right turn to 9000 on heading 047° and on BRK VOR/DME R-091 to ADANE INT/BRK 11.1 DME and hold.</p>
--	---------------	---

ATIS 125.0 254.3	SPRINGS APP CON 124.0 257.875	SPRINGS TOWER 119.9 360.6	GND CON 121.7 348.6	CLNC DEL 134.45 363.125
----------------------------	---	-------------------------------------	-------------------------------	-----------------------------------



ELEV 6187	D	TDZE 6075
-----------	----------	-----------

HIRL Rwy 17R-35L and 17L-35R
REIL Rwy 13, 17R, 31 and 35R
TDZ/CL Rwy 17L and 35R
MIRL Rwy 13-31



Procedure NA for arrivals
on PUB VORTAC airway
radials 267 CW 354.

MIDAY INT PUB 21.4	PETEY CO LOM	6700 ↑	9000 hdg 047°	BRK R-091	ADANE △
VGSIs and ILS glidepath not coincident (VGSIs Angle 3.00/TCH 71).					
GS 3.00° TCH 51		8100 → 352° → 8100			
		7.4 NM		6 NM	

CATEGORY	A	B	C	D
----------	---	---	---	---

S-ILS 35L RA 123/12 100 DA 6175

SA CATEGORY II ILS - SPECIAL AIRCREW & AIRCRAFT CERTIFICATION REQUIRED

SW-1, 25 FEB 2021 to 25 MAR 2021

SW-1, 25 FEB 2021 to 25 MAR 2021