

LOC I-COS <b>109.9</b>	APP CRS <b>352°</b>	Rwy Idg TDZE Apt Elev	<b>11022</b> <b>6075</b> <b>6187</b>
---------------------------	------------------------	-----------------------------	--

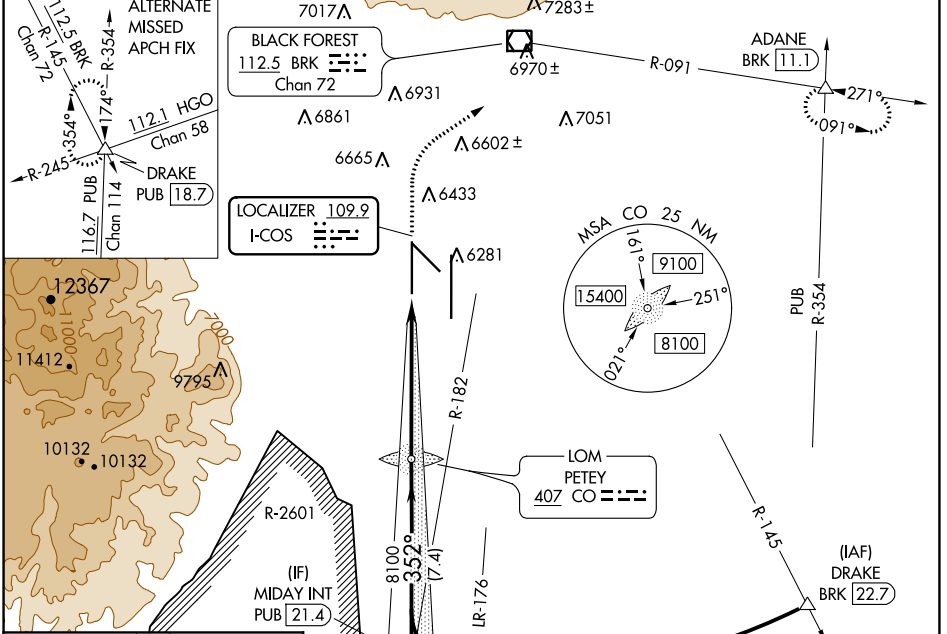
# ILS or LOC RWY 35L

CITY OF COLORADO SPRINGS MUNI (COS)

**⚠** RADAR monitoring required when R-2601 in use.  
 \* RVR 1800 authorized with the use of FD or AP or HUD to DA.

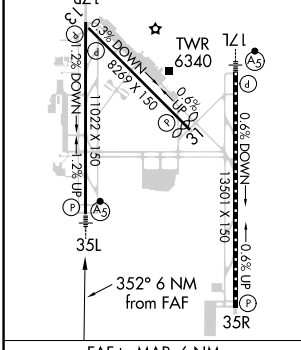
**MALSR** MISSED APPROACH: Climb to 6700 then climbing right turn to 9000 on heading 047° and on BRK VOR/DME R-091 to ADANE INT/BRK 11.1 DME and hold.

ATIS <b>125.0 254.3</b>	SPRINGS APP CON <b>124.0 257.875</b>	SPRINGS TOWER <b>119.9 360.6</b>	GND CON <b>121.7 348.6</b>	CLNC DEL <b>134.45 363.125</b>
----------------------------	---	-------------------------------------	-------------------------------	-----------------------------------

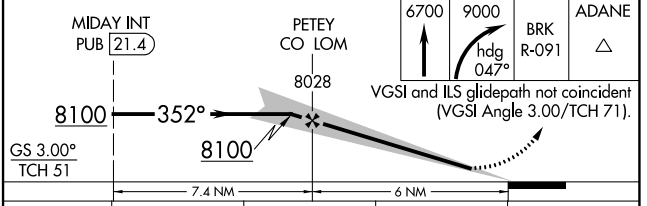
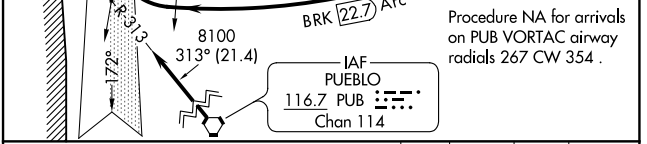


ELEV 6187	<b>D</b> TDZE 6075
-----------	--------------------

HIRL Rwy 17R-35L and 17L-35R  
 REIL Rwy 13, 17R, 31 and 35R  
 TDZ/CL Rwy 17L and 35R  
 MIRL Rwy 13-31



FAF to MAP 6 NM					
Knots	60	90	120	150	180
Min:Sec	6:00	4:00	3:00	2:24	2:00



CATEGORY	A	B	C	D
S-ILS 35L *	6275/24		200 (100-½)	
S-LOC 35L	6540/24	465 (400-½)	6540/50	465 (400-1)
<b>C</b> CIRCLING	6740-1 553 (600-1)	6800-1 613 (700-1)	7040-2½ 853 (900-2½)	7260-3 1073 (1100-3)

SW-1, 25 FEB 2021 to 25 MAR 2021

SW-1, 25 FEB 2021 to 25 MAR 2021