

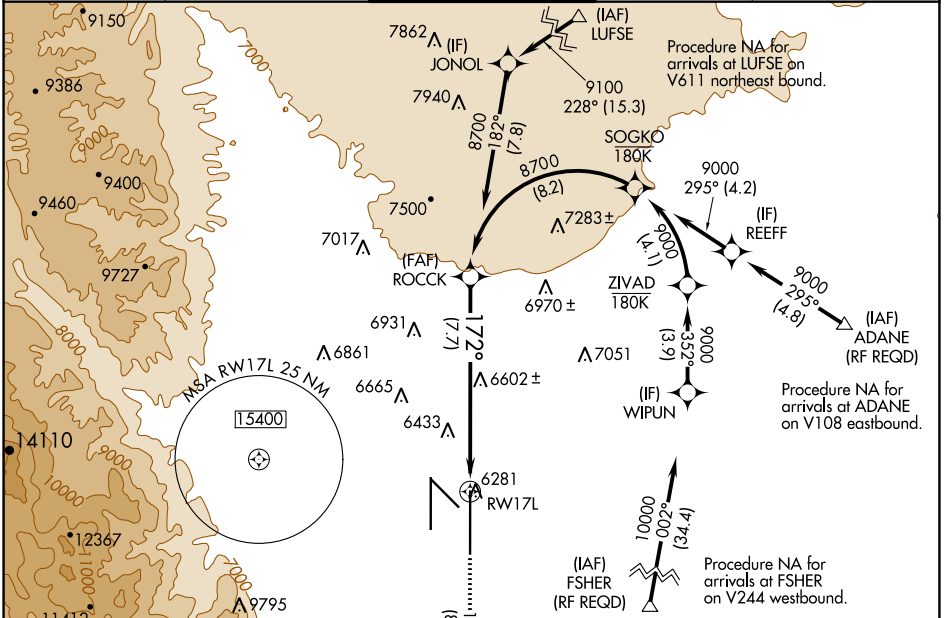
APP CRS <b>172°</b>	Rwy Idg TDZE Apt Elev	<b>13501</b> <b>6187</b> <b>6187</b>
------------------------	-----------------------------	--

# RNAV (RNP) Z RWY 17L

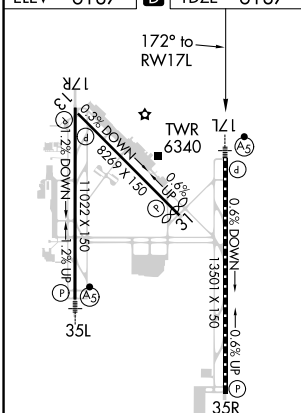
CITY OF COLORADO SPRINGS MUNI (COS)

<p>For uncompensated Baro-VNAV systems, procedure NA below -21°C (-5°F) or above 44°C (112°F). GPS required.</p>		<p>MISSED APPROACH: Climb to 9000 on track 172° to CEGIX and on track 130° to JEMKI and on track 084° to DRAKE and hold.</p>

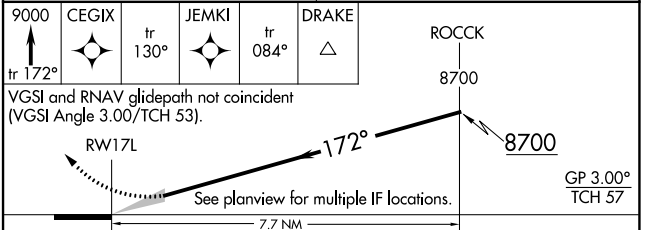
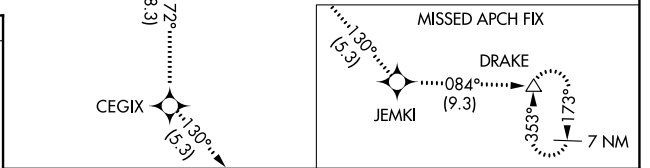
ATIS <b>125.0 254.3</b>	SPRINGS APP CON <b>124.0 257.875</b>	SPRINGS TOWER <b>119.9 360.6</b>	GND CON <b>121.7 348.6</b>	CLNC DEL <b>134.45 363.125</b>
----------------------------	---	-------------------------------------	-------------------------------	-----------------------------------



ELEV	6187	<b>D</b>	TDZE	6187
------	------	----------	------	------



MIRL Rwy 13-31  
HIRL Rwys 17R-35L and 17L-35R  
REIL Rwys 13, 17R, 31 and 35R  
TDZ/CL Rwys 17L and 35R



CATEGORY	A	B	C	D
RNP 0.15 DA		6557/40	370 (400-¾)	
RNP 0.25 DA		6644/50	457 (500-1)	
RNP 0.30 DA		6920-2	733 (800-2)	

## AUTHORIZATION REQUIRED

SW-1, 25 FEB 2021 to 25 MAR 2021

SW-1, 25 FEB 2021 to 25 MAR 2021