

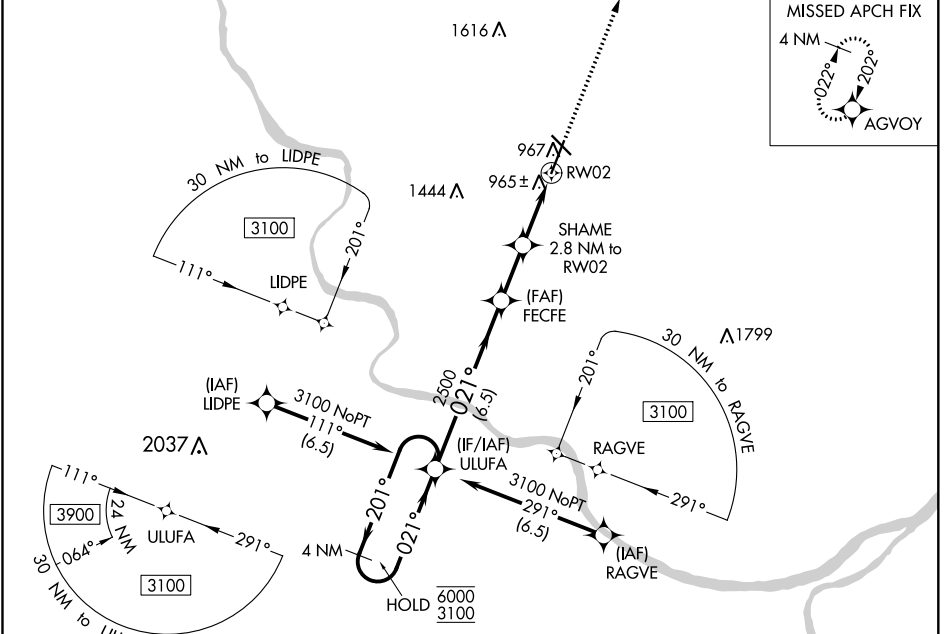
WAAS CH <b>77599</b> <b>W02A</b>	APP CRS <b>021°</b>	Rwy Idg TDZE Apt Elev	<b>6501</b> <b>889</b> <b>889</b>
--	------------------------	-----------------------------	---

# RNAV (GPS) RWY 2

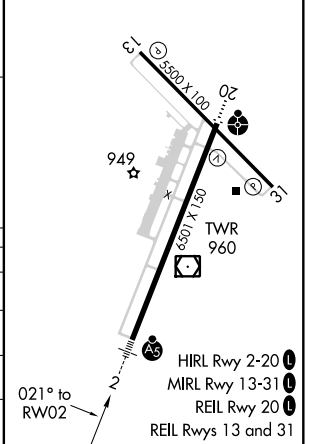
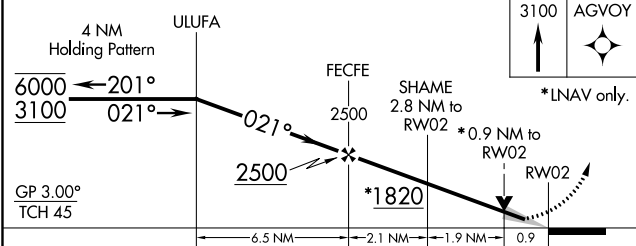
COLUMBIA RGNL (COU)

RNP APCH.	MALSR	MISSED APPROACH: Climb to 3100 direct AGVOY and hold.
<p><b>⚠</b> Circling NA for Cat D west of Rws 2 and 13. Circling Rwy 20 NA at night. For uncompensated Baro-VNAV systems, LNAV/VNAV NA below -17°C or above 54°C. For inop ALS, increase LNAV/VNAV all Cats visibility to RVR 4000. #RVR 1800 authorized with the use of FD or AP or HUD to DA.</p>		

ATIS <b>128.45</b>	MIZZO APP CON <b>124.375 353.7</b>	COLUMBIA TOWER * <b>119.3 (CTAF) 0 363.25</b>	GND CON <b>121.9</b>	UNICOM <b>122.95</b>
-----------------------	---------------------------------------	--	-------------------------	-------------------------



ELEV 889	<b>D</b> TDZE 889
----------	-------------------



CATEGORY	A	B	C	D
LPV DA#	1089/24		200 (200-½)	
LNAV/VNAV	1143/24		254 (300-½)	
LNAV MDA	1220/24	331 (400-½)	1220/26	331 (400-½)
<b>C</b> CIRCLING	1300-1 411 (500-1)	1340-1 451 (500-1)	1360-1½ 471 (500-½)	1440-2 551 (600-2)

NC-3, 25 FEB 2021 to 25 MAR 2021

NC-3, 25 FEB 2021 to 25 MAR 2021