

GATEWAY ONE DEPARTURE

AL-5316 (FAA)

ST LOUIS DOWNTOWN (CPS)
CAHOKIA/ST. LOUIS, ILLINOIS

EC-3, 25 FEB 2021 to 25 MAR 2021

TOP ALTITUDE: ASSIGNED BY ATC

TAKEOFF MINIMUMS

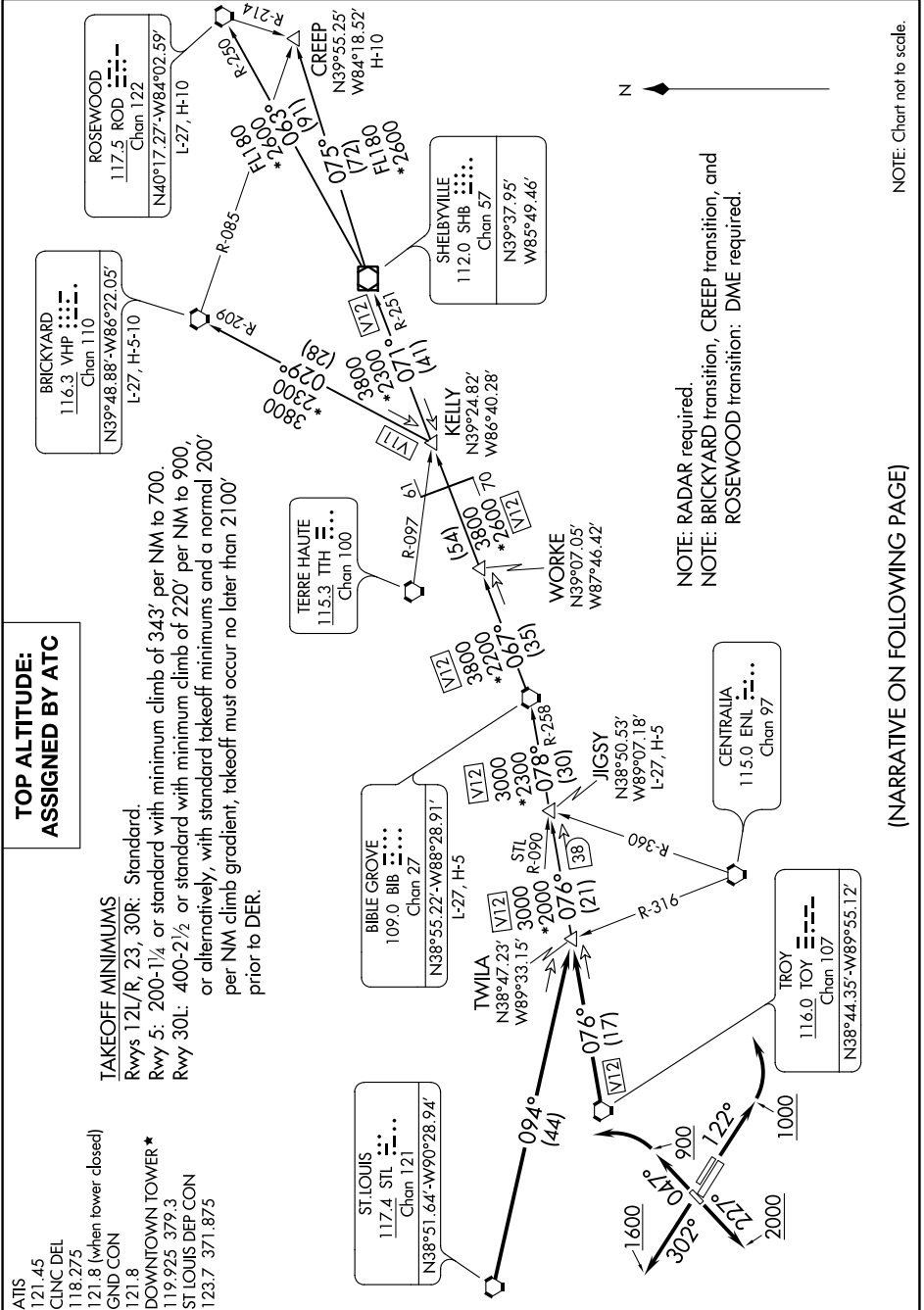
Rwys 12L/R, 23, 30R: Standard.
 Rwy 5: 200-1/4 or standard with minimum climb of 343' per NM to 700.
 Rwy 30L: 400-2 1/2 or standard with minimum climb of 220' per NM to 900,
 or alternatively, with standard takeoff minimums and a normal 200'
 per NM climb gradient, takeoff must occur no later than 2100'
 prior to DER.

ATIS 121.45
 CLNC DEL 118.275
 121.8 (when tower closed)
 GND CON 121.8
 DOWNTOWN TOWER * 119.925 379.3
 ST LOUIS DEP CON 123.7 371.875

GATEWAY ONE DEPARTURE

(GATWY1.TWILA) 08NOV18

CAHOKIA/ST. LOUIS, ILLINOIS
ST LOUIS DOWNTOWN (CPS)



(NARRATIVE ON FOLLOWING PAGE)

NOTE: Chart not to scale.

EC-3, 25 FEB 2021 to 25 MAR 2021