

WAAS CH 70521 W30A	APP CRS 302°	Rwy Idg TDZE 411 Apt Elev 413	7002
----------------------------------------	------------------------	---------------------------------------------------	-------------

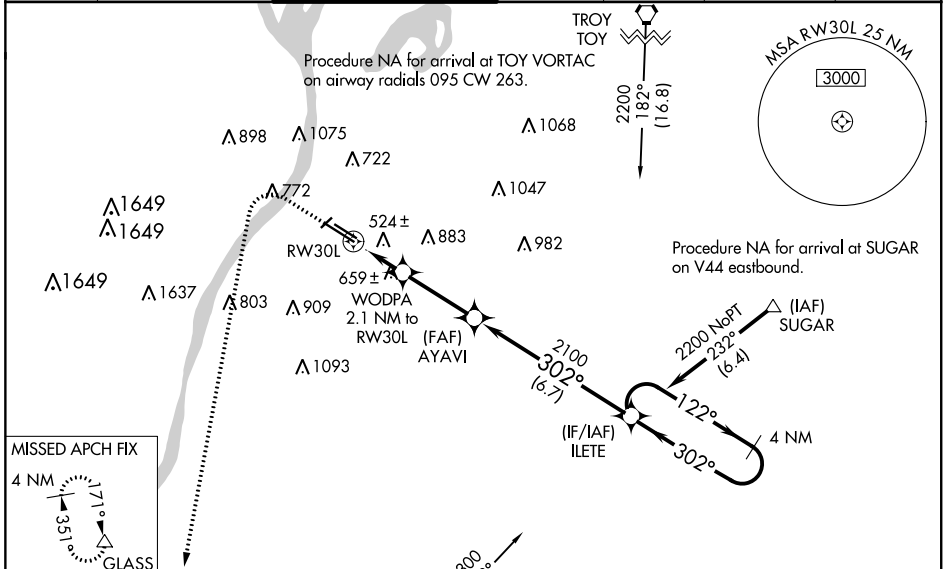
RNAV (GPS) RWY 30L

ST LOUIS DOWNTOWN (CPS)

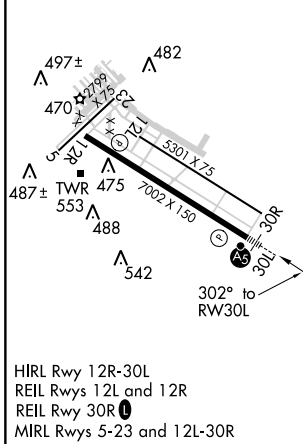
▼ DME/DME RNP-0.3 NA. When local altimeter setting not received, use St Louis Lambert Intl altimeter setting and increase all DA 63 feet and all MDA 80 feet; increase LNAV/VNAV all Cats visibility 1/4 mile, LNAV Cat C and D visibility 3/8 mile, Circling Cat C visibility 1/4 mile and Circling Cat D visibility 1/2 mile. VDP and Baro-VNAV NA with St Louis Lambert Intl altimeter setting. For uncompensated Baro-VNAV systems, LNAV/VNAV NA below -15°C (5°F) or above 41°C (105°F). When using St Louis Lambert Intl altimeter setting; for npt MALSR, increase LPV all Cats visibility to 3/8 mile and LNAV Cats C/D visibility to 1 3/8 mile. Inop landing: Rwy 5 NA.

MALSR
MISSED APPROACH:
Climb to 1000 then climbing left turn to 3000 direct GLASS and hold.

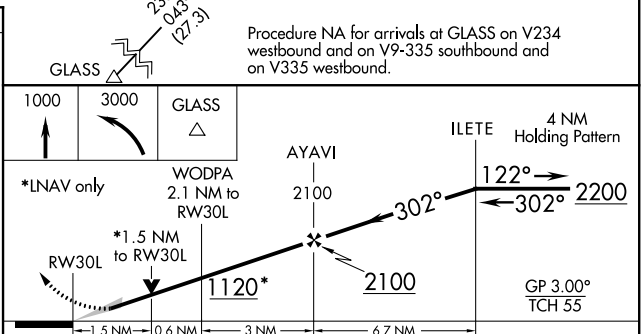
ATIS 121.45	ST LOUIS APP CON 123.7 371.875	DOWNTOWN TOWER * 119.925 (CTAF) 0 379.3	GND CON 121.8	CLNC DEL 118.275	CLNC DEL 121.8 (when twr closed)	UNICOM 122.95
-----------------------	------------------------------------------	---------------------------------------------------	-------------------------	----------------------------	-----------------------------------------------	-------------------------



ELEV 413	D	TDZE 411
-----------------	----------	-----------------



HIRL Rwy 12R-30L
REIL Rwy 12L and 12R
REIL Rwy 30R
MIRL Rwy 5-23 and 12L-30R



CATEGORY	A	B	C	D
LPV DA		611-1/2	200 (200-1/2)	
LNAV/VNAV DA		827-7/8	416 (500-7/8)	
LNAV MDA	940-1/2	529 (600-1/2)	940-1	529 (600-1)
CIRCLING	940-1	527 (600-1)	1000-1 1/2 587 (600-1 1/2)	1080-2 667 (700-2)

EC-3, 25 FEB 2021 to 25 MAR 2021

EC-3, 25 FEB 2021 to 25 MAR 2021