

KUSSO SEVEN DEPARTURE (RNAV)

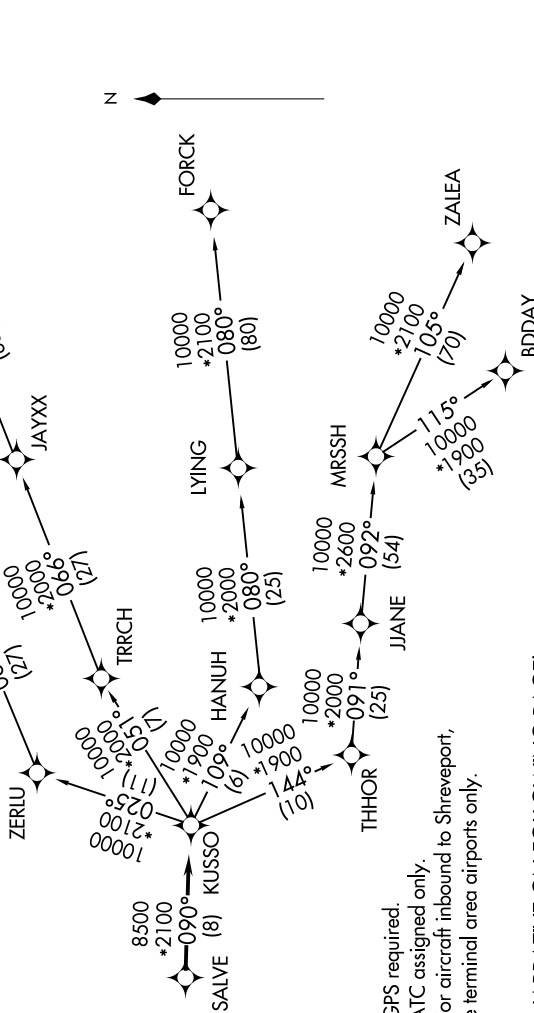
SC-2, 25 FEB 2021 to 25 MAR 2021

CTAF
122.8
REGIONAL DEP CON
135.975 379.9

**TOP ALTITUDE:
ASSIGNED BY ATC**

TAKEOFF MINIMUMS

Rwy 15: Standard.
Rwy 33: 300-1/2 or standard with minimum climb of 422' per NM to 1200.



- NOTE: RADAR required.
- NOTE: RNAV 1.
- NOTE: DME/DME/IRU or GPS required.
- NOTE: BDDAY transition: ATC assigned only.
- NOTE: MRSSH transition: For aircraft inbound to Shreveport, Jackson and Monroe terminal area airports only.

(NARRATIVE ON FOLLOWING PAGE)

NOTE: Chart not to scale.

SC-2, 25 FEB 2021 to 25 MAR 2021

KUSSO SEVEN DEPARTURE (RNAV)