

APP CRS <b>267°</b>	Rwy ldg <b>4400</b>
	TDZE <b>893</b>
	Apt Elev <b>894</b>

# RNAV (GPS) RWY 26

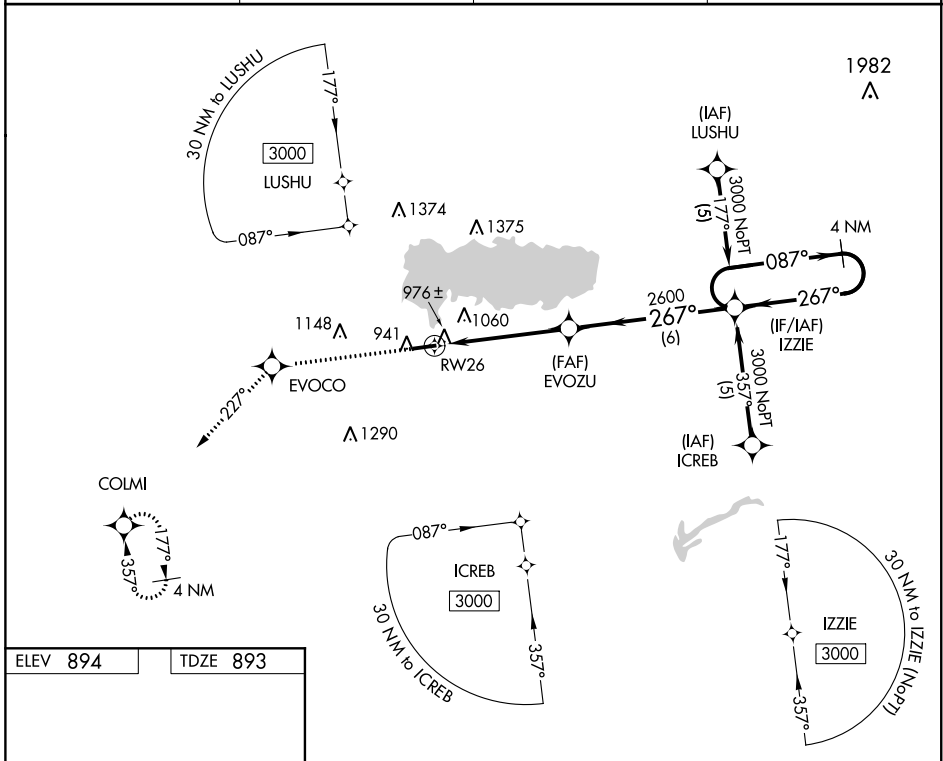
LAKEFIELD (CQA)

**▼** DME/DME RNP-0.3 NA. Visibility reduction by helicopters NA. Baro-VNAV NA. Use Wapakoneta altimeter setting. When not received, use James M. Cox Dayton Intl altimeter setting and increase all DA 73 feet and all MDA 80 feet and increase LNAV/VNAV Cats A/B/C and LNAV Cat C visibility ¼ mile.

**▲** NA

MISSED APPROACH: Climb to 3000 direct EVOCO and on track 227° to COLMI and hold.

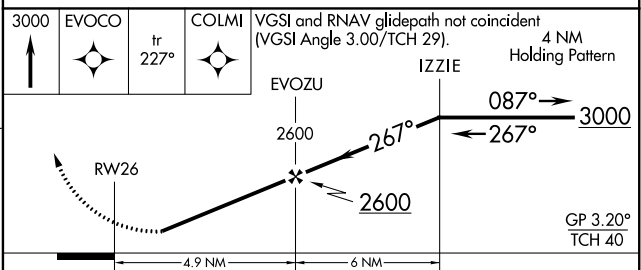
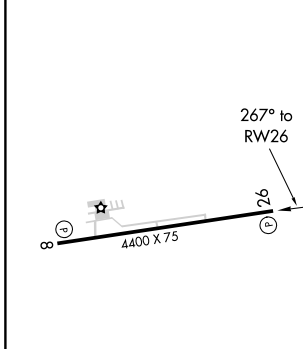
AXV AWOS-3PT <b>128.325</b>	COLUMBUS APP CON <b>118.425 352.05</b>	UNICOM <b>122.8 (CTAF)</b>	<b>123.3</b> <b>0</b>
--------------------------------	-------------------------------------------	-------------------------------	-----------------------



EC-2, 25 FEB 2021 to 25 MAR 2021

EC-2, 25 FEB 2021 to 25 MAR 2021

ELEV 894	TDZE 893
----------	----------



CATEGORY	A	B	C	D
LNAV/VNAV DA	1277-1½	384 (400-1½)		NA
LNAV MDA	1260-1	367 (400-1)		NA
CIRCLING	1320-1 426 (500-1)	1360-1 466 (500-1)	1360-1½ 466 (500-1½)	NA