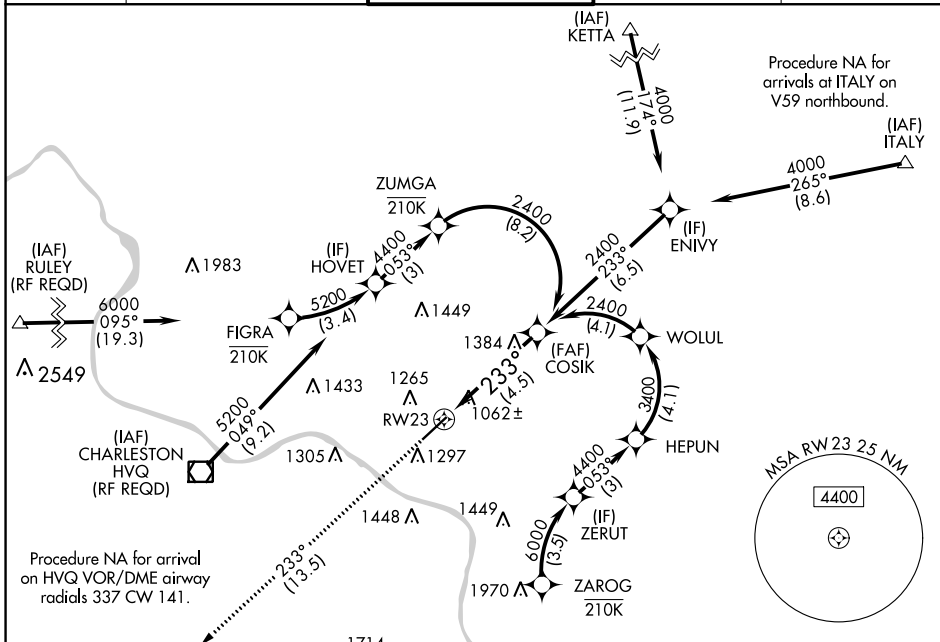


| | | |
|------------------------|-----------------------------|---|
| APP CRS 233° | Rwy Idg TDZE Apt Elev | 6215 931 947 |
|------------------------|-----------------------------|---|

RNAV (RNP) Z RWY 23

YEAGER (CRW)

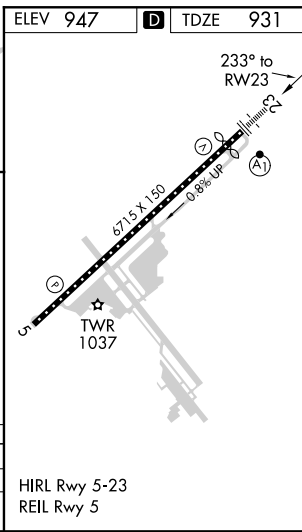
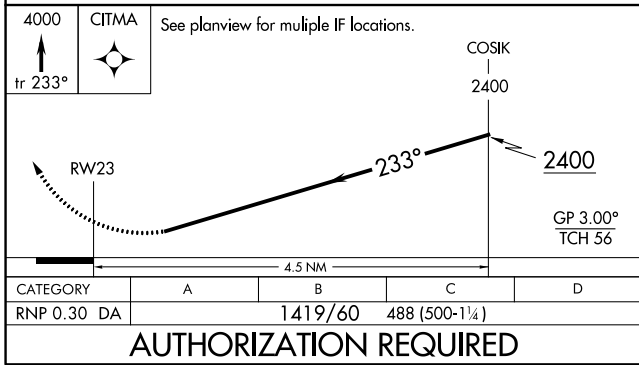
| | | | | |
|---|--|--|---|---------------------------|
| RNP AR APCH. | | ALSF-1 | MISSED APPROACH: Climb to 4000 on track 233° to CITMA and hold. | |
| <p>▼ For uncompensated Baro-VNAV systems, procedure NA below -15°C or above 54°C. For inop ALS, increase RNP 0.30 all Cats visibility to 1½ SM.</p> | | | | |
| ATIS 127.6 | CHARLESTON APP CON 124.1 269.125 | CHARLESTON TOWER 125.7 257.8 | GND CON 121.8 348.6 | CLNC DEL 118.55 |



NE-4, 25 FEB 2021 to 25 MAR 2021

NE-4, 25 FEB 2021 to 25 MAR 2021

| | |
|----------|-------------------|
| ELEV 947 | D TDZE 931 |
|----------|-------------------|



HIRL Rwy 5-23
REIL Rwy 5