

WAAS CH <b>78331</b> <b>W36A</b>	APP CRS <b>359°</b>	Rwy Idg TDZE Apt Elev	<b>3899</b> <b>680</b> <b>684</b>
--	------------------------	-----------------------------	---

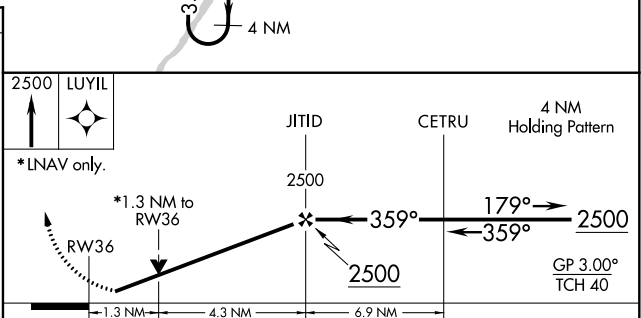
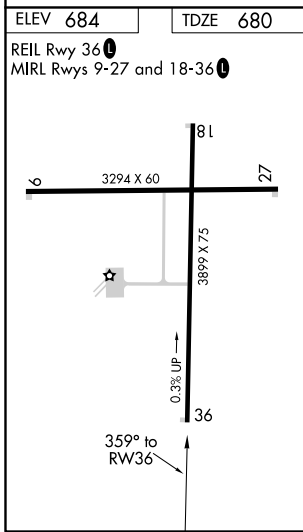
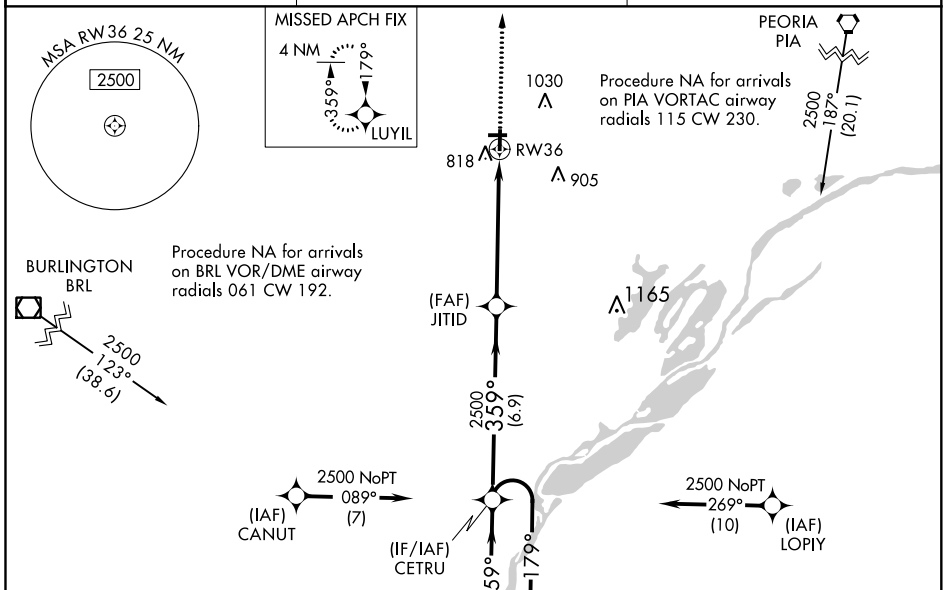
# RNAV (GPS) RWY 36

INGERSOLL (CTK)

**⚠ NA** Night landing: Rwy 09, 18, 27 NA. Baro-VNAV NA when using General Downing-Peoria Intl altimeter setting. For uncompensated Baro-VNAV systems, LNAV/VNAV NA below -16°C (4°F) or above 54°C (130°F). DME/DME RNP-0.3 NA. Helicopter visibility reduction below ¼ SM NA. When local altimeter setting not received, use General Downing-Peoria Intl altimeter setting and increase all DA 46 feet and all MDA 60 feet; increase LPV and LNAV/VNAV all Cats visibility ½ mile. VDP NA when using General Downing-Peoria Intl altimeter setting.

**MISSED APPROACH:** Climb to 2500 direct LUYIL and hold.

AWOS-A <b>122.8</b>	PEORIA APP CON <b>124.675 269.2</b>	UNICOM <b>122.8 (CTAF) 0</b>
------------------------	--	---------------------------------



CATEGORY	A	B	C	D
LPV DA	930-7/8	250 (300-7/8)		NA
LNAV/VNAV DA	998-11/8	318 (400-11/8)		NA
LNAV MDA	1120-1	440 (500-1)	1120-13/8 440 (500-13/8)	NA
CIRCLING	1140-1	456 (500-1)	1140-11/2 456 (500-11/2)	NA

EC-3, 25 FEB 2021 to 25 MAR 2021

EC-3, 25 FEB 2021 to 25 MAR 2021