

CANTON, ILLINOIS

AL-5900 (FAA)

20310

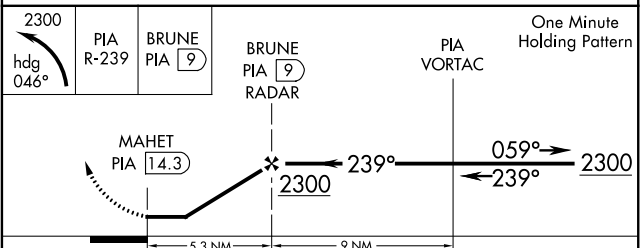
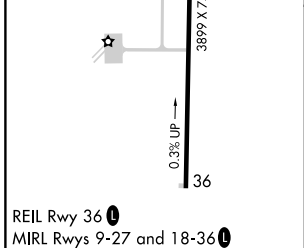
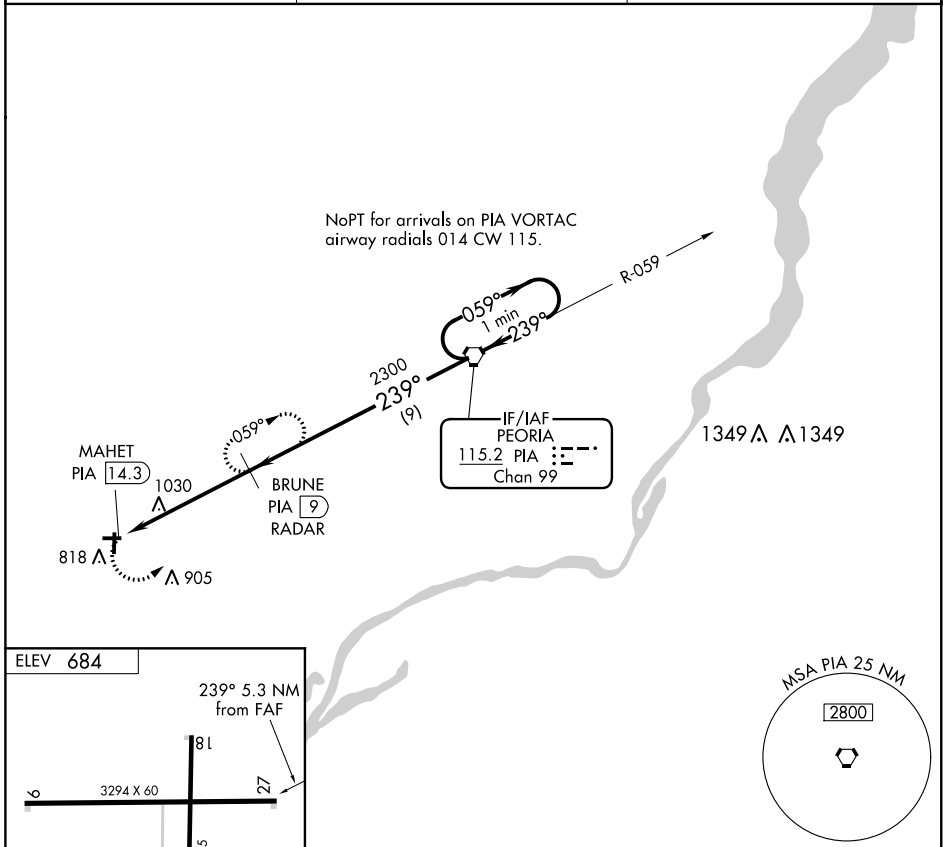
VORTAC PIA <b>115.2</b> Chan <b>99</b>	APP CRS <b>239°</b>	Rwy Idg TDZE Apt Elev <b>N/A</b> <b>N/A</b> <b>684</b>
--	------------------------	---

**VOR-A**  
INGERSOLL (CTK)

**NA** When local altimeter setting not received, use General Down-  
Peoria Intl altimeter setting and increase all MDA 60 feet and  
Circling Cat C visibility ¼ mile. DME or RADAR required.

MISSED APPROACH: Climbing left turn  
to 2300 via heading 046° and PIA R-239  
to BRUNE/PIA 9 DME and hold.

AWOS-A <b>122.8</b>	PEORIA APP CON <b>124.675 269.2</b>	UNICOM <b>122.8 (CTAF) 0</b>
------------------------	--	---------------------------------



FAF to MAP 5.3 NM						
Knots	60	90	120	150	180	
Min:Sec	5:18	3:32	2:39	2:07	1:46	
CATEGORY	A		B		C	D
CIRCLING	1340-1		656 (700-1)		1340-1¾ 656 (700-1¾)	NA

CANTON, ILLINOIS  
Amdt 8 31JUL08

40°34'N-90°04'W

INGERSOLL (CTK)  
**VOR-A**

EC-3, 25 FEB 2021 to 25 MAR 2021

EC-3, 25 FEB 2021 to 25 MAR 2021