

VORTAC CTY <b>112.0</b> Chan <b>57</b>	APP CRS <b>304°</b>	Rwy Idg <b>5001</b> TDZE <b>42</b> Apt Elev <b>42</b>
--	------------------------	---

# VOR RWY 31

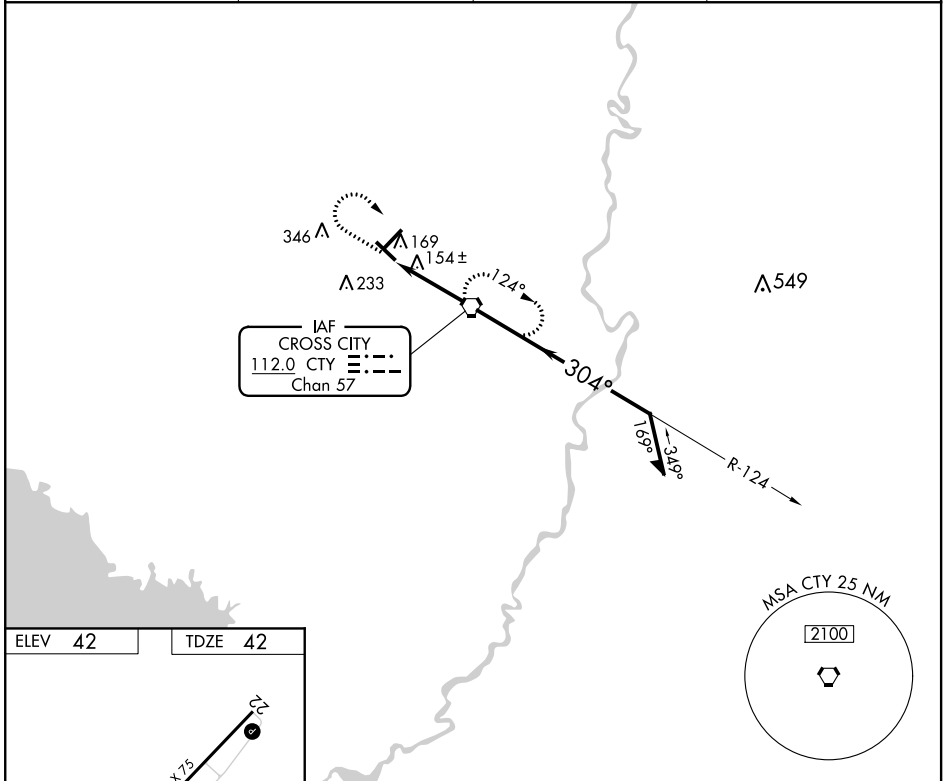
CROSS CITY (CTY)

**▽** Helicopter visibility reduction below 1 SM NA. Use Williston altimeter setting; when not received, use Gainesville altimeter setting and increase all MDA 40 feet and increase Circling Cat C visibility ¼ mile. Rwy 31 Straight-in and Circling and Circling to Rwy 4/13 NA at night.

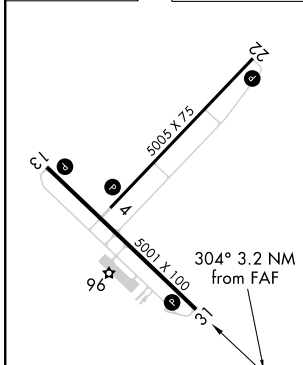
**△ NA**

MISSED APPROACH: Climb to 1000 then climbing right turn to 2000 direct CTY VORTAC and hold.

AWOS-3PT <b>120.775</b>	X60 AWOS-3T <b>118.425</b>	JACKSONVILLE CENTER <b>127.8 352.0</b>	UNICOM <b>122.8 (CTAF) 0</b>
----------------------------	-------------------------------	---	---------------------------------



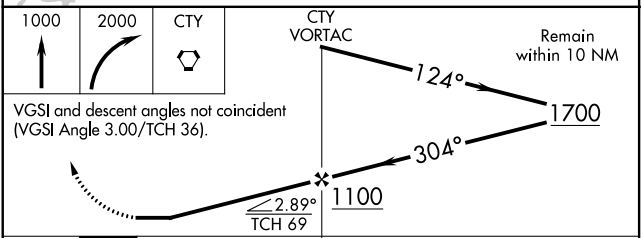
ELEV 42	TDZE 42
---------	---------



MIRL Rws 4-22 and 13-31 **0**  
REIL Rws 13 and 31 **0**

FAF to MAP 3.2 NM

Knots	60	90	120	150	180
Min:Sec	3:12	2:08	1:36	1:17	1:04



CATEGORY	A	B	C	D
S-31	560-1 518 (600-1)	560-1½ 518 (600-1½)	560-1¾ 518 (600-1¾)	560-2 518 (600-2)
CIRCLING	620-1 578 (600-1)	620-1½ 578 (600-1½)	620-2 578 (600-2)	740-2¼ 698 (700-2¼)

SE-3, 25 FEB 2021 to 25 MAR 2021

SE-3, 25 FEB 2021 to 25 MAR 2021