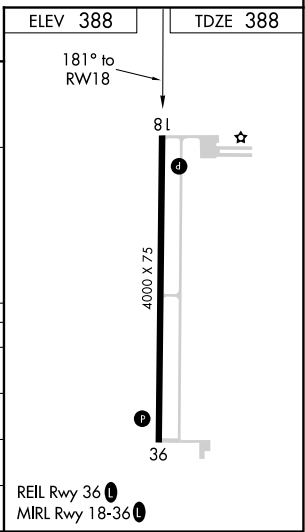
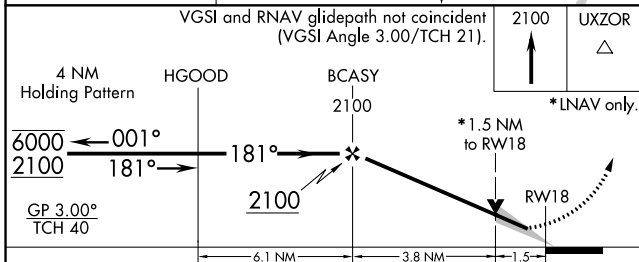
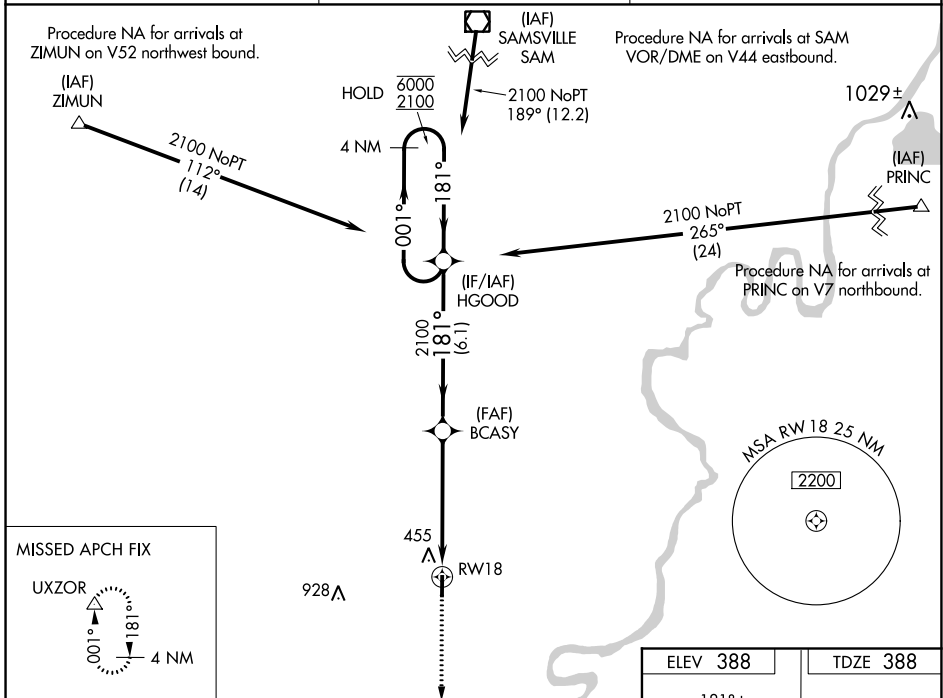


WAAS CH <b>56343</b> <b>W18A</b>	APP CRS <b>181°</b>	Rwy Idg TDZE Apt Elev	<b>4000</b> <b>388</b> <b>388</b>
--	------------------------	-----------------------------	---

# RNAV (GPS) RWY 18

CARMI MUNI (CUL)

RNP APCH. ▼ For uncompensated Baro-VNAV systems, LNAV/VNAV NA ▲ below -19°C or above 54°C.		MISSED APPROACH: Climb to 2100 direct UXZOR and hold.
AWOS-3 <b>118,425</b>	EVANSVILLE APP CON * <b>127.35 343.7</b>	UNICOM <b>122.8</b> (CTAF) <b>0</b>



CATEGORY	A	B	C	D
LPV DA	638-3/4 250 (300-3/4)			NA
LNAV/VNAV DA	679-7/8 291 (300-7/8)			NA
LNAV MDA	900-1 512 (600-1)		900-1 512 (600-1 3/8)	NA
<b>C</b> CIRCLING	900-1 512 (600-1)		1000-1 612 (700-1 3/4)	NA

EC-3, 25 FEB 2021 to 25 MAR 2021

EC-3, 25 FEB 2021 to 25 MAR 2021