

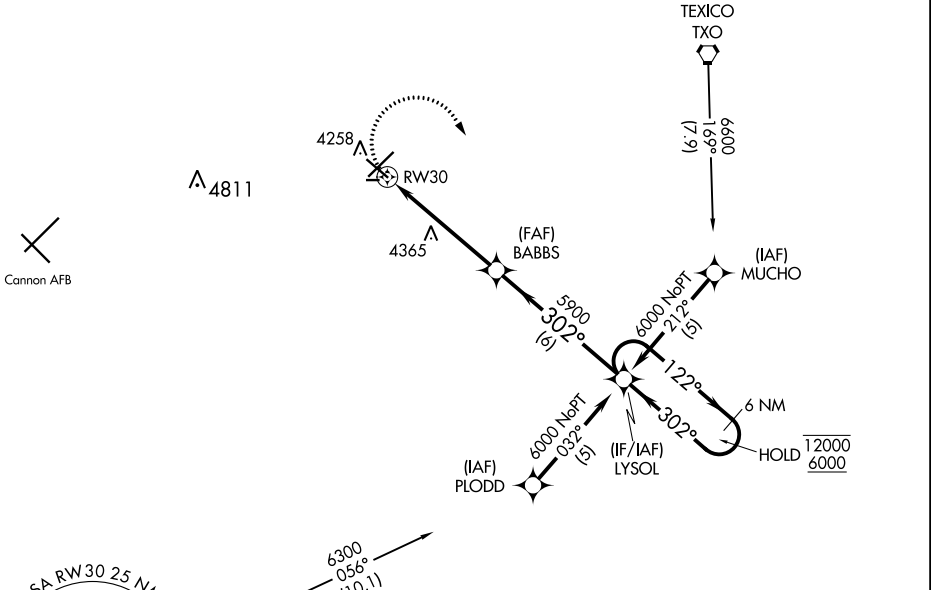
APP CRS	Rwy Idg	5697
302°	TDZE	4202
	Apt Elev	4216

RNAV (GPS) RWY 30

CLOVIS MUNI (CVN)

RNP APCH.		MISSED APPROACH: Climbing right turn to 6000 direct LYSOL and hold.	
CAUTION: Cannon AFB 12 NM WSW, heavy USAF fighter traffic.			
AWOS-3PT 135.375	CANNON APP CON 118.425 352.1	CLNC DEL 119.0	UNICOM 122.8 (CTAF) ①

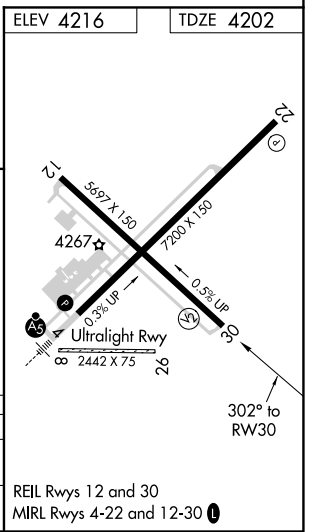
Procedure NA for arrivals at TXO VORTAC via V62 northwest bound.



SW-1, 25 FEB 2021 to 25 MAR 2021

SW-1, 25 FEB 2021 to 25 MAR 2021

6000	LYSOL	VGSI and descent angles not coincident (VGSI Angle 3.00/TCH 75)	
		LYSOL	6 NM Holding Pattern
CATEGORY	A	B	C
LNVA MDA	4620-1	418 (500-1)	4620-1¼ 418 (500-1¼)
CIRCLING	4680-1	464 (500-1)	4700-1½ 484 (500-1½) 4820-2 604 (700-2)



REIL Rwy 12 and 30
MIRL Rwy 4-22 and 12-30 ①