

VORTAC TXO <b>112.2</b> Chan <b>59</b>	APP CRS <b>242°</b>	Rwy Idg TDZE Apt Elev	<b>7200</b> <b>4214</b> <b>4216</b>
--	------------------------	-----------------------------	---

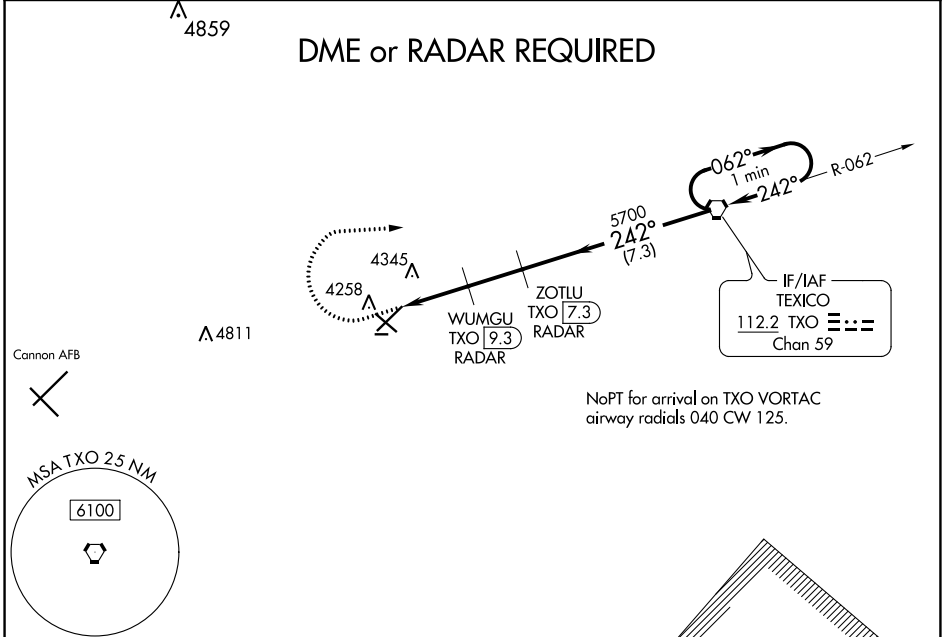
# VOR RWY 22

CLOVIS MUNI (CVN)

**⚠** DME or Radar required. When local altimeter setting not received, use Cannon AFB altimeter setting and increase all MDA 40 feet; increase S-22 Cat C/D visibility 1/8 mile. VDP NA when using Cannon AFB altimeter setting.

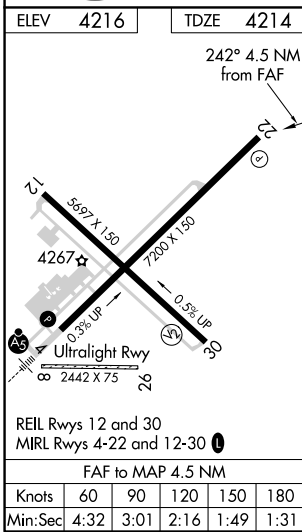
**⚠** MISSED APPROACH: Climb to 4700 then climbing right turn to 6000 direct TXO VORTAC and hold.

AWOS-3PT <b>135.375</b>	CANNON APP CON <b>118.425 352.1</b>	CLNC DEL <b>119.0</b>	UNICOM <b>122.8 (CTAF)</b> <b>📻</b>
----------------------------	--	--------------------------	--



SW-1, 25 FEB 2021 to 25 MAR 2021

SW-1, 25 FEB 2021 to 25 MAR 2021



4700	6000	TXO	ZOTLU TXO 7.3 RADAR		TXO VORTAC	One Minute Holding Pattern
			WUMGLU TXO 9.3 RADAR	TXO 11.8		
242°		242°		062°		6000
5040		5700		242°		6000
1		1.5		2		7.3
4700	6000	TXO	ZOTLU TXO 7.3 RADAR	TXO VORTAC		
WUMGLU TXO 9.3 RADAR	TXO 11.8	TXO 10.8	2.99° TCH 47	242°	062°	6000
CATEGORY		A	B	C	D	
S-22		4600-1	386 (400-1)	4600-1 1/8	386 (400-1 1/8)	
CIRCLING		4680-1	464 (500-1)	4700-1 1/2	4820-2	
				484 (500-1 1/2)	604 (700-2)	