

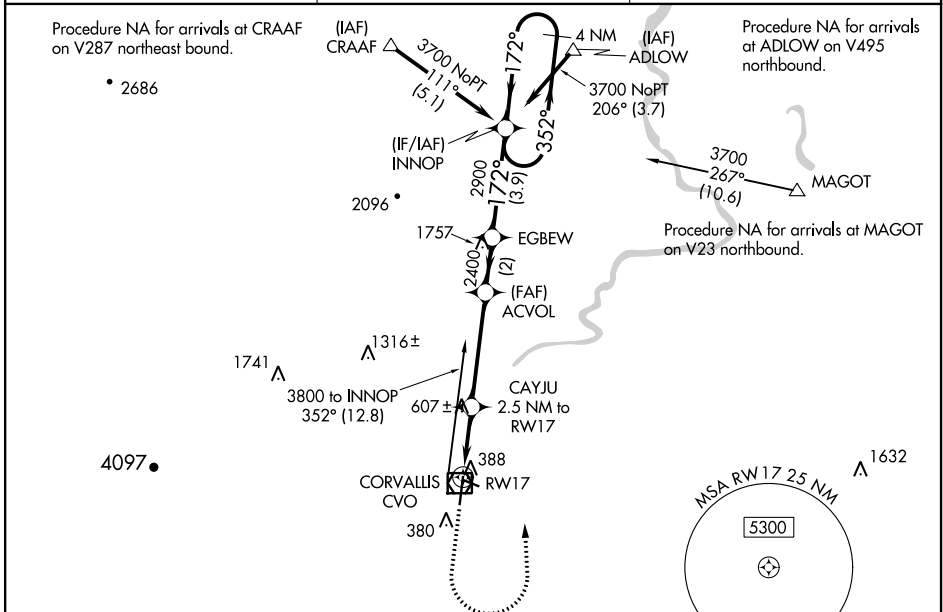
WAAS CH <b>78311</b> <b>W17A</b>	APP CRS <b>172°</b>	Rwy Idg TDZE <b>248</b> Apt Elev <b>250</b>
--	------------------------	---

# RNAV (GPS) RWY 17

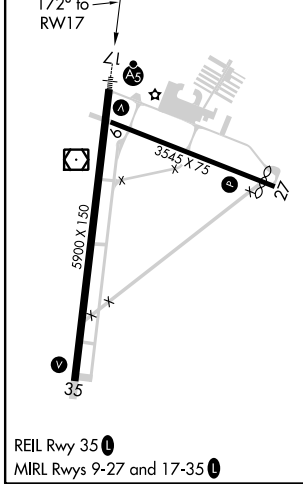
CORVALLIS MUNI (CVO)

<p><b>NA</b> For uncompensated Baro-VNAV systems, LNAV/VNAV NA below -15°C (5°F) or above 54°C (130°F). DME/DME RNP-0.3 NA. For inop ALS, increase LNAV/VNAV all Cats visibility to 1 SM and increase LNAV Cat C/D visibility to 1½ mile.</p>	<p>MALSR</p>	<p>MISSED APPROACH: Climb to 1100 then climbing left turn to 3700 direct INNOP and hold, continue climb-in-hold to 3700.</p>
---	--------------	--

<p>AWOS-3PT <b>135.775</b></p>	<p>CASCADE APP CON * <b>127.5 348.7</b></p>	<p>UNICOM <b>123.075 (CTAF)</b></p>
------------------------------------	---	---



ELEV 250	<b>D</b>	TDZE 248
----------	----------	----------



1100	3700	INNOP	VGSi and RNAV glidepath not coincident (VGSi Angle 3.00/TCH 45).			
*LNAV only	CAYJU 2.5 NM to RWY17	ACVOL	EGBEW	INNOP	4 NM Holding Pattern	
*1.8 NM to RWY17	1080*	2400	2900	3700	352°	GP 3.00° TCH 45
1.8 NM	0.7	4.1 NM	2 NM	3.9 NM		
CATEGORY	A	B	C	D		
LPV DA		448-½	200 (200-½)			
LNAV/VNAV DA		571-5/8	323 (400-5/8)			
LNAV MDA	860-½	612 (700-½)	860-13/8	612 (700-13/8)		
<b>C</b> CIRCLING	860-1	610 (700-1)	920-13/4 670 (700-13/4)	1080-23/4 830 (900-23/4)		

NW-1, 25 FEB 2021 to 25 MAR 2021

NW-1, 25 FEB 2021 to 25 MAR 2021