

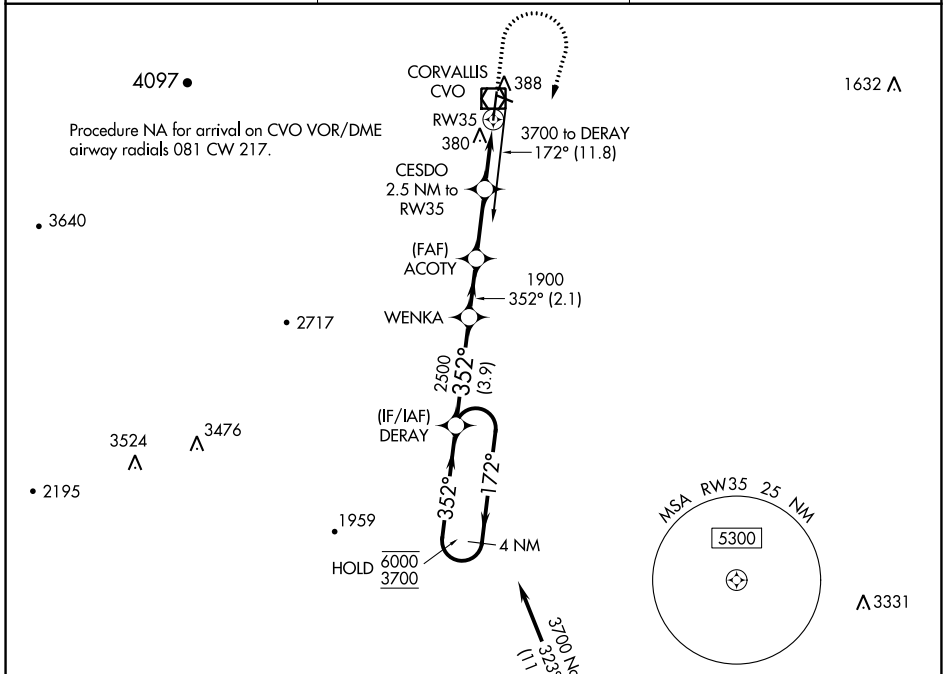
WAAS CH 69517 W35A	APP CRS 352°	Rwy Idg TDZE 250 Apt Elev 250	5900
--	------------------------	---	-------------

RNAV (GPS) RWY 35

CORVALLIS MUNI (CVO)

RNP APCH.	MISSED APPROACH: Climb to 1000 then climbing right turn to 3700 direct DERAY and hold, continue climb-in-hold to 3700.
<p>▼ For uncompensated Baro-VNAV systems, LNAV/VNAV NA below -1.5°C or above 54°C. When local altimeter setting not received, procedure NA.</p> <p>▲ NA</p>	

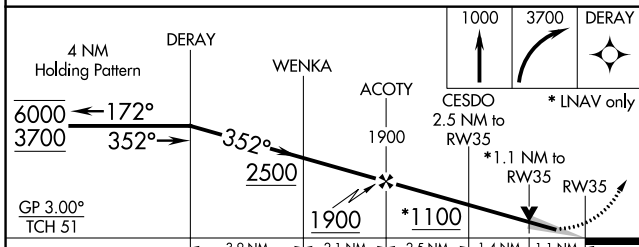
AWOS-3PT 135.775	CASCADE APP CON * 127.5 348.7	UNICOM 123.075 (CTAF) ①
----------------------------	---	-----------------------------------



NW-1, 25 FEB 2021 to 25 MAR 2021

NW-1, 25 FEB 2021 to 25 MAR 2021

ELEV 250	TDZE 250
MIRL Rwy 9-27 and 17-35 ① REIL Rwy 35 ①	



CATEGORY	A	B	C	D
LPV DA	500- ³ / ₄ 250 (300- ³ / ₄)			
LNAV/VNAV DA	551- ⁷ / ₈ 301 (400- ⁷ / ₈)			
LNAV MDA	640-1 390 (400-1)		640-1 ¹ / ₈ 390 (400-1 ¹ / ₈)	
CRCLING	720-1 470 (500-1)		920-1 ³ / ₄ 1080-2 ³ / ₄ 670 (700-1 ³ / ₄) 830 (900-2 ³ / ₄)	

