

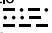
(SHEDD3.SHEDD) 18256
SHEDD THREE DEPARTURE

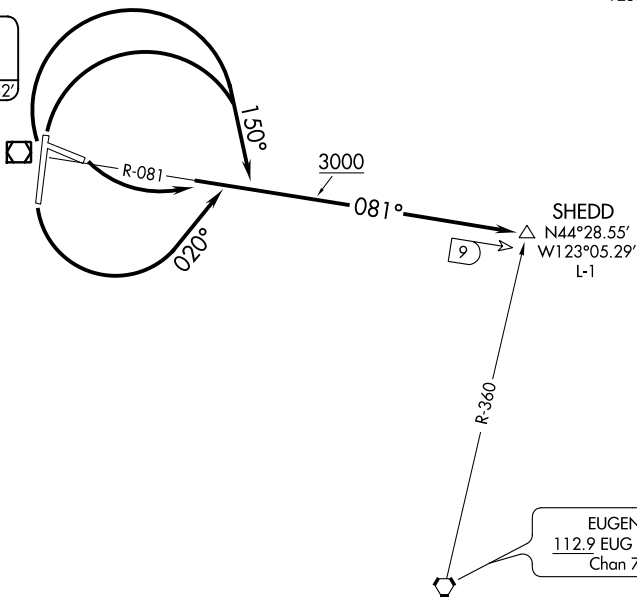
AL-782 (FAA)

CORVALLIS MUNI (CVO)
CORVALLIS, OREGON

**TOP ALTITUDE:
3000**

AWOS-3PT 135.775
CASCADE DEP CON ★
127.5 348.7
CTAF 123.075
SEATTLE CENTER
125.8 291.7

CORVALLIS
115.4 CVO 
Chan 101
N44°29.97'-W123°17.62'



TAKEOFF MINIMUMS

Rwys 9, 17: Standard.

Rwy 27: Standard with minimum climb of 345' per NM to 3100.

Rwy 35: 400-2¾ or standard with minimum climb of 205' per NM to 800.

NOTE: Chart not to scale.



DEPARTURE ROUTE DESCRIPTION

TAKEOFF RUNWAY 9: Climbing left turn to 3000 on CVO R-081 to SHEDD INT, thence. . . .

TAKEOFF RUNWAY 17: Climbing left turn to 3000 heading 020° and on CVO R-081 to SHEDD INT, thence. . . .

TAKEOFF RUNWAYS 27, 35: Climbing right turn to 3000 heading 150° and on CVO R-081 to SHEDD INT, thence. . . .

. . . .on assigned route of flight.

LOST COMMUNICATIONS:

If not in contact with air traffic control upon reaching 3000', continue climb to assigned altitude direct CVO VOR/DME. Thence on assigned route of flight.

SHEDD THREE DEPARTURE
(SHEDD3.SHEDD) 13SEP18

CORVALLIS, OREGON
CORVALLIS MUNI (CVO)

NW-1, 25 FEB 2021 to 25 MAR 2021

NW-1, 25 FEB 2021 to 25 MAR 2021