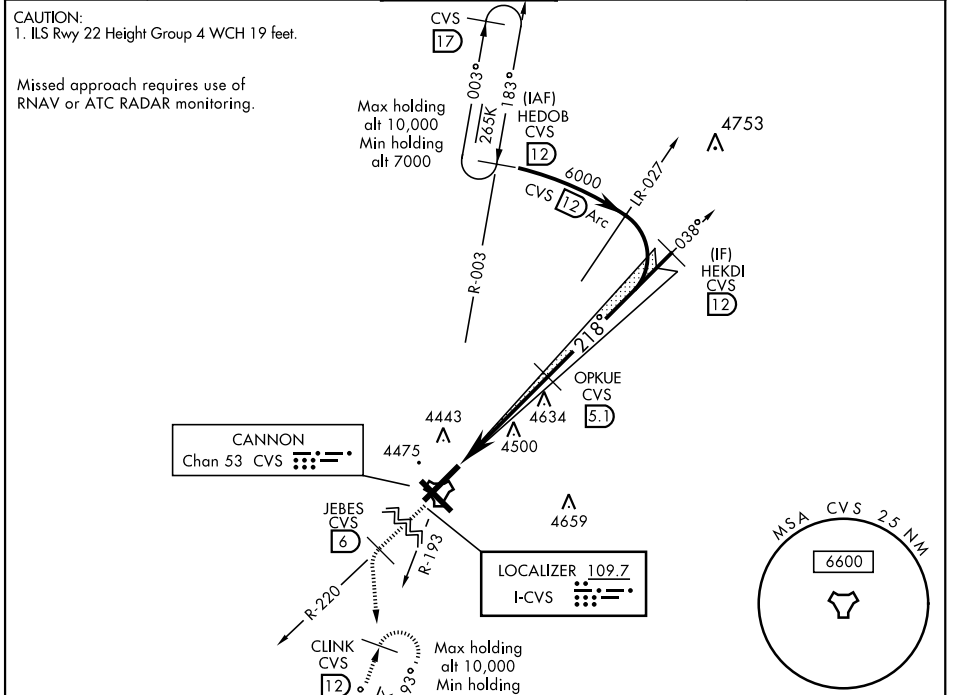


ILS or LOC RWY 22

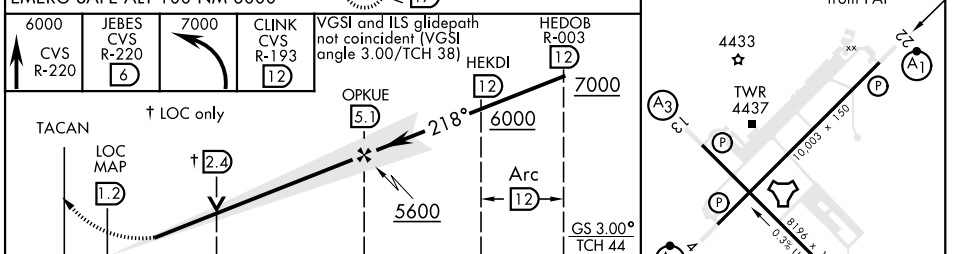
LOC I-CVS 109.7	APCH CRS 218°	Rwy Idg 10,003 TDZE 4295 Arpt Elev 4295	AL-512 [USAF]	CANNON AFB (KCVS)
---------------------------	-------------------------	--	---------------	-------------------

▽ * When ALS inop, increase RVR to 40 and vis to 3/4 miles.
****** When ALS inop, increase CAT AB RVR to 55 and vis to 1 mile, CAT CDE vis to 1 1/4 miles.

ATIS 119.1 269.9	CANNON APP CON 118.425 352.1	CANNON TOWER 120.4 270.25	GND CON 121.9 275.8	CLNC DEL 120.2 293.225
----------------------------	--	-------------------------------------	-------------------------------	----------------------------------



ELEV 4295	TDZE 4295
218° 4 NM from FAF	



EMERG SAFE ALT 100 NM 8000	6000 CVS R-220	JEBES CVS R-220	7000	CLINK CVS R-193	VGSI and ILS glidepath not coincident (VGSI angle 3.00/TCH 38)	HEKDI R-003	HEDOB R-003
TACAN	LOC MAP	↑ LOC only	↑ 2.4	OPKUE	218°	6000	7000
CATEGORY	A	B	C	D	E		
S-ILS 22*	4495/24		200	(200-1/2)			
S-LOC 22**	4720/24	425 (500-1/2)	4720/40		425 (500-3/4)		
CIRCLING	4840-1	545 (600-1)	4860-1 1/2	5000-2 1/4	5020-2 1/2		
			565 (600-1 1/2)	705 (800-2 1/4)	725 (800-2 1/2)		
REIL all Rwy		HIRL all Rwy		FAF to MAP 4 NM			
Knots		60	90	120	150	180	
Min:Sec		4:00	2:40	2:00	1:36	1:20	

ILS or LOC RWY 22

SW-1, 25 FEB 2021 to 25 MAR 2021

SW-1, 25 FEB 2021 to 25 MAR 2021