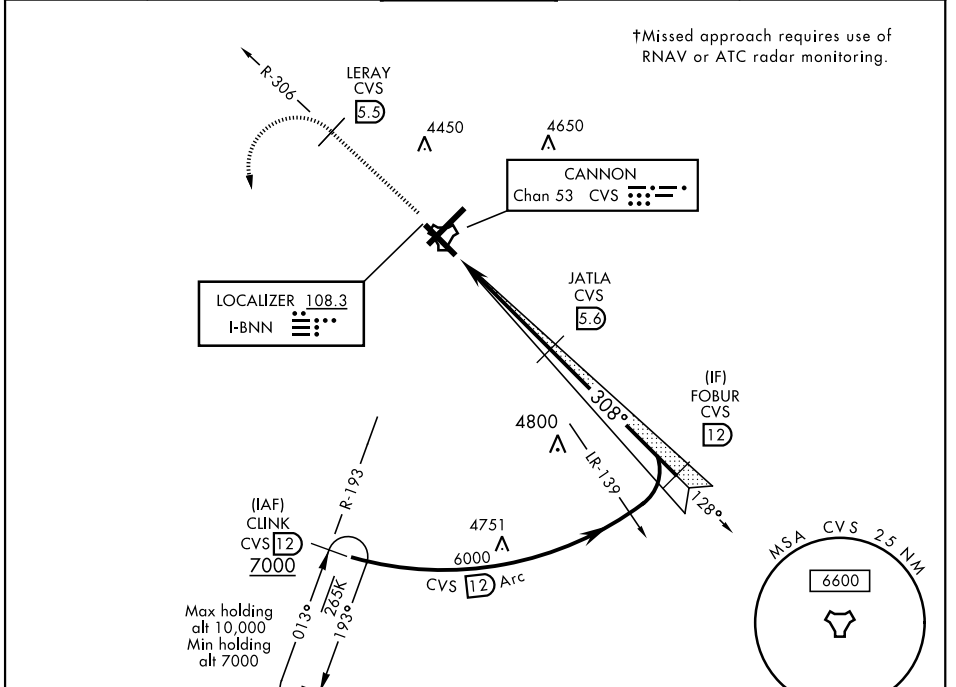


ILS or LOC RWY 31

LOC I-BNN 108.3	APCH CRS 308°	Rwy ldg 8196 TDZE 4270 Arprt Elev 4295	AL-512 [USAF]	CANNON AFB (KCVS)
* When ALS inop, increase CAT ABCDE vis to ¾ mile. ** When ALS inop, increase CAT AB vis to 1 mile, CAT CDE vis to 1 ½ miles.			SSALR (A3)	† MISSED APPROACH: Climb to 6000 out CVS TACAN R-306 to 5.5 DME (LERAY) then turn left climbing to 7000 intercept CVS R-193 to 12 DME (CLINK) and hold.

ATIS 119.1 269.9	CANNON APP CON 118.425 352.1	CANNON TOWER 120.4 270.25	GND CON 121.9 275.8	CLNC DEL 120.2 293.225
----------------------------	--	-------------------------------------	-------------------------------	----------------------------------



† Missed approach requires use of RNAV or ATC radar monitoring.

ATC RADAR OR DME REQUIRED

EMERG SAFE ALT 100 NM 9000

6000	LERAY CVS R-306 (5.5)	7000	CLINK CVS R-193 (12)	VGSI TCH (41') and the procedure TCH (51') is greater than 3'.	FOBUR (12)
CATEGORY	A	B	C	D	E
S-ILS 31*	4470-½		200	(200-½)	
S-LOC 31**	4660-½ 390 (400-½)		4660-5/8 390 (400-5/8)		
CIRCLING	4840-1 (600-1)		4860-1½ 5000-2¼		5020-2½
	545		565 (600-1½) 705 (800-2¼)		725 (800-2½)
REIL all Rwy HIRL all Rwy FAF to MAP 4.9 NM					
Knots		60	90	120	150 180
Min:Sec		4:54	3:16	2:27	1:58 1:38

ILS or LOC RWY 31

SW-1, 25 FEB 2021 to 25 MAR 2021

SW-1, 25 FEB 2021 to 25 MAR 2021