

CLOVIS, NEW MEXICO

RNAV (GPS) RWY 31

APCH CRS 308°	Rwy Idg 8196
	TDZE 4270
	Arprt Elev 4295

AL-512 (USAF)

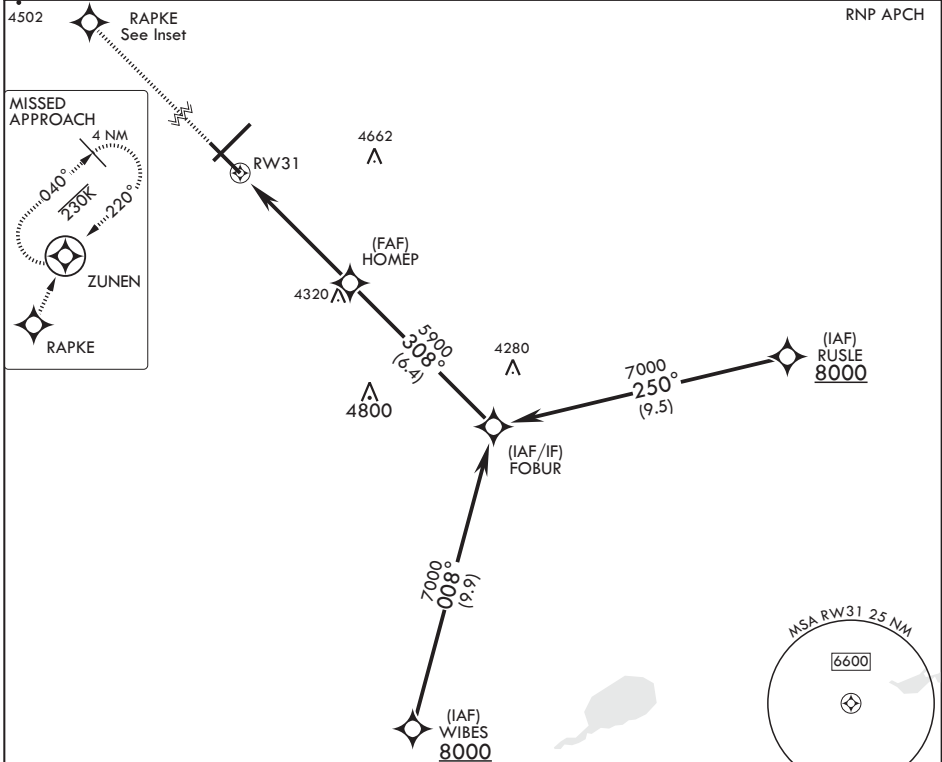
CANNON AFB (KCVS)

▼ * When ALS inop, increase CAT AB vis to 1 mile, CAT CDE vis to 1 3/8 miles.

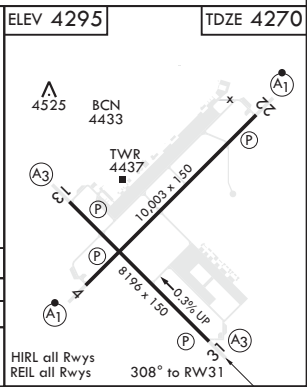
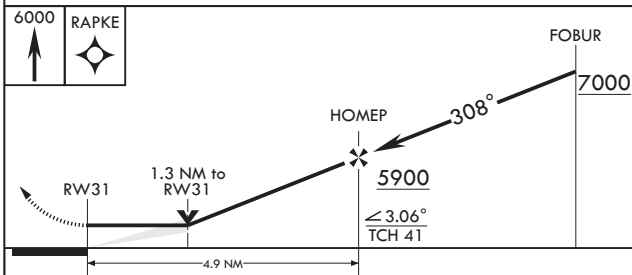


MISSED APPROACH: Climb to 6000 direct RAPKE, then turn right to ZUNEN and climb to 7000 and hold.

ATIS 119.1 269.9	CANNON APP CON 118.425 352.1	TOWER 120.4 270.25	GND CON 121.9 275.8	CLNC DEL 120.2 293.225
----------------------------	--	------------------------------	-------------------------------	----------------------------------



EMERG SAFE ALT 100 NM 9000



CATEGORY	A	B	C	D	E
LNAV MDA*	4720-1/2	450 (500-1/2)	4720-7/8	450	(500-7/8)
CIRCLING	4840-1	545 (600-1)	4860-1 1/2 565 (600-1 1/2)	5000-2 1/4 705 (800-2 1/4)	5020-2 1/2 725 (800-2 1/2)

CLOVIS, NEW MEXICO

34°23'N - 103°19'W

CANNON AFB (KCVS)

Amdt 5 10SEP20

RNAV (GPS) RWY 31

SW-1, 25 FEB 2021 to 25 MAR 2021

SW-1, 25 FEB 2021 to 25 MAR 2021