

CLOVIS, NEW MEXICO


RNAV (GPS) RWY 4

WAAS CH 41172 W04A	APCH CRS 038°	Rwy ldg TDZE Arprt Elev	10,003 4284 4295
--------------------------	------------------	-------------------------------	------------------------

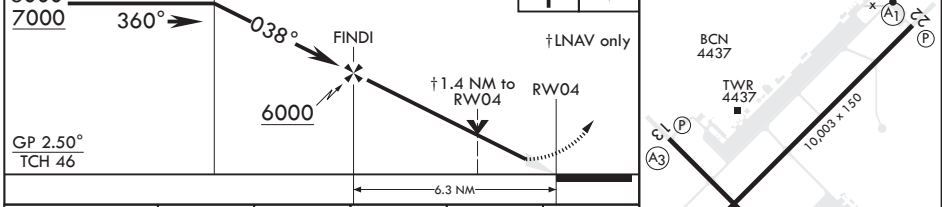
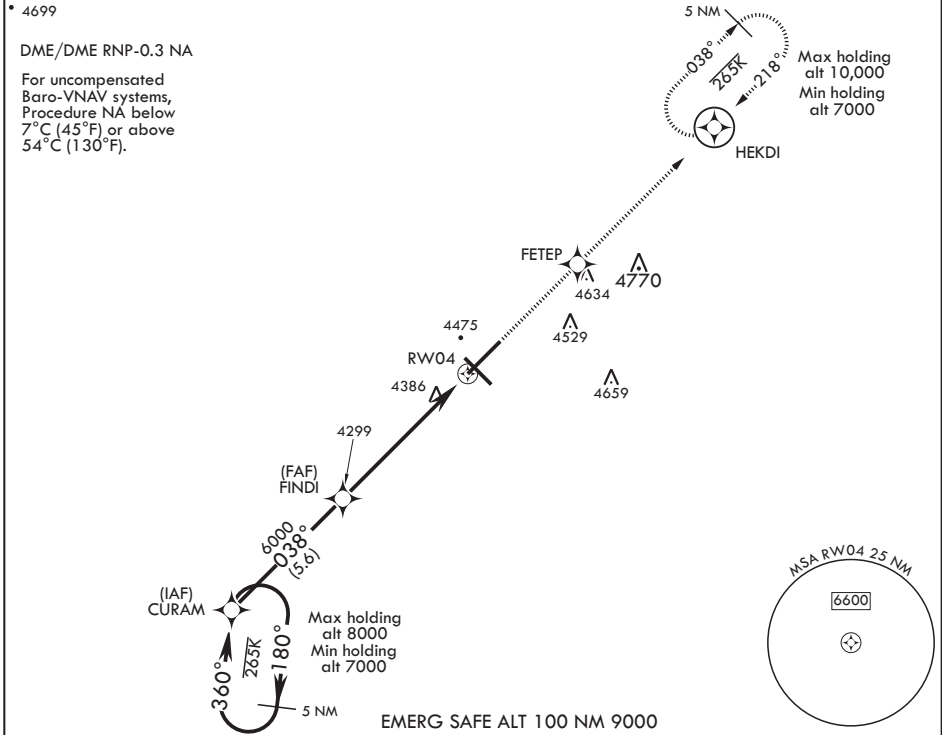
AL-512 (USAF)

CANNON AFB (KCVS)

▽ * When ALS inop, increase CAT ABCDE RVR to 40, vis to 3/4 mile.
 ** When ALS inop increase Cat ABCDE vis to 1 3/4 miles.
 *** When ALS inop, increase CAT AB RVR to 55, vis to 1 mile; CAT CDE RVR to 60, vis to 1 1/8 miles.

ALSF-1

 MISSED APPROACH: Climb to 6000 direct FETEP then climbing to 7000 track to HEKDI and hold.

ATIS 119.1 269.9	CANNON APP CON 118.425 352.1	TOWER 120.4 270.25	GND CON 121.9 275.8	CLNC DEL 120.2 293.225
---------------------	---------------------------------	-----------------------	------------------------	---------------------------



CATEGORY	A	B	C	D	E
LPV DA*	4484/24		200	(200-1/2)	
LNAV/VNAV DA**	4707-1 1/4		423	(500-1 1/4)	
LNAV MDA***	4700/24	416 (500-1/2)	4700/40	416 (500-3/4)	
CIRCLING	4840-1 545 (600-1)	4860-1 1/2	5000-2 1/4	5020-2 1/2	
		565 (600-1 1/2)	705 (800-2 1/4)	725 (800-2 1/2)	

CLOVIS, NEW MEXICO

34°23'N - 103°19'W

CANNON AFB (KCVS)

Amdt 3 10OCT19

RNAV (GPS) RWY 4

SW-1, 25 FEB 2021 to 25 MAR 2021

SW-1, 25 FEB 2021 to 25 MAR 2021