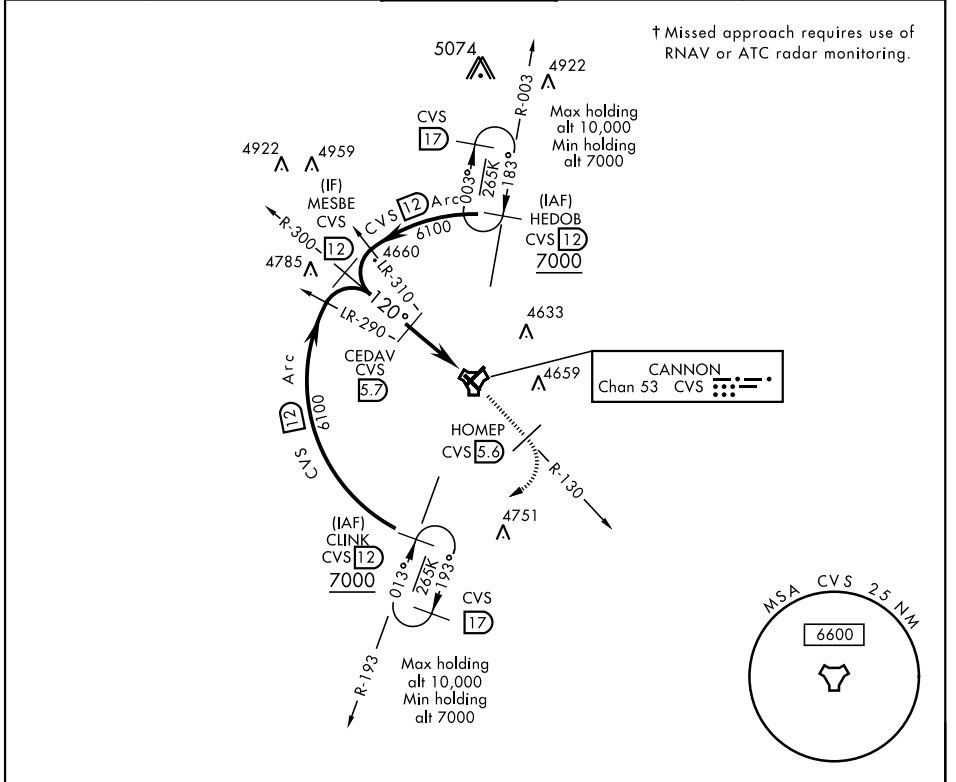


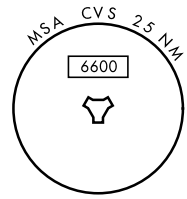
TACAN RWY 13

TACAN CVS Chan 53	APCH CRS 120°	Rwy ldg 8196 TDZE 4294 Arpt Elev 4295	AL-512 [USAF]	CANNON AFB (KCVS)
▼ * When ALS inop, increase CAT AB vis to 1 mile, CAT CDE vis to 1½ miles.			SSALR (A3)	† MISSED APPROACH: Climb to 6000 out CVS TACAN R-130 to 5.6 DME (HOMEP) then turn right climbing to 7000 intercept CVS R-193 to 12 DME (CLINK) and hold.

ATIS 119.1 269.9	CANNON APP CON 118.425 352.1	CANNON TOWER 120.4 270.25	GND CON 121.9 275.8	CLNC DEL 120.2 293.225
----------------------------	--	-------------------------------------	-------------------------------	----------------------------------



† Missed approach requires use of RNAV or ATC radar monitoring.



EMERG SAFE ALT 100 NM 9000

MESBE R-300 12		CEDAV 5.7		TACAN		ELEV 4295		TDZE 4294	
6100		6000		HASRU 7		120° 5.1 NM from FAF		4421, 4433, 4437, 4327 TWR	
3.13° TCH 37		5 NM		1 NM		10,000 x 150		8150 x 150	
CATEGORY	A	B	C	D	E				
S-13*	4800-¾	506 (600-¾)	4800-1	506	(600-1)				
CIRCLING	4840-1	545 (600-1)	4860-1½ 565 (600-1½)	5000-2¼ 705 (800-2¼)	5020-2½ 725 (800-2½)	REIL all Rwy HIRL all Rwy			

TACAN RWY 13

SW-1, 25 FEB 2021 to 25 MAR 2021

SW-1, 25 FEB 2021 to 25 MAR 2021