

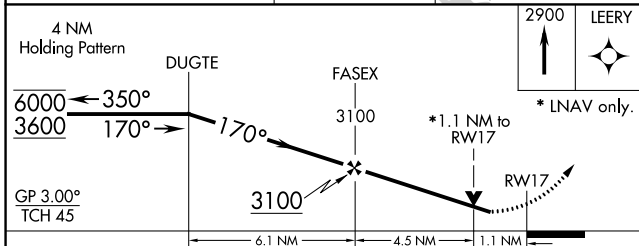
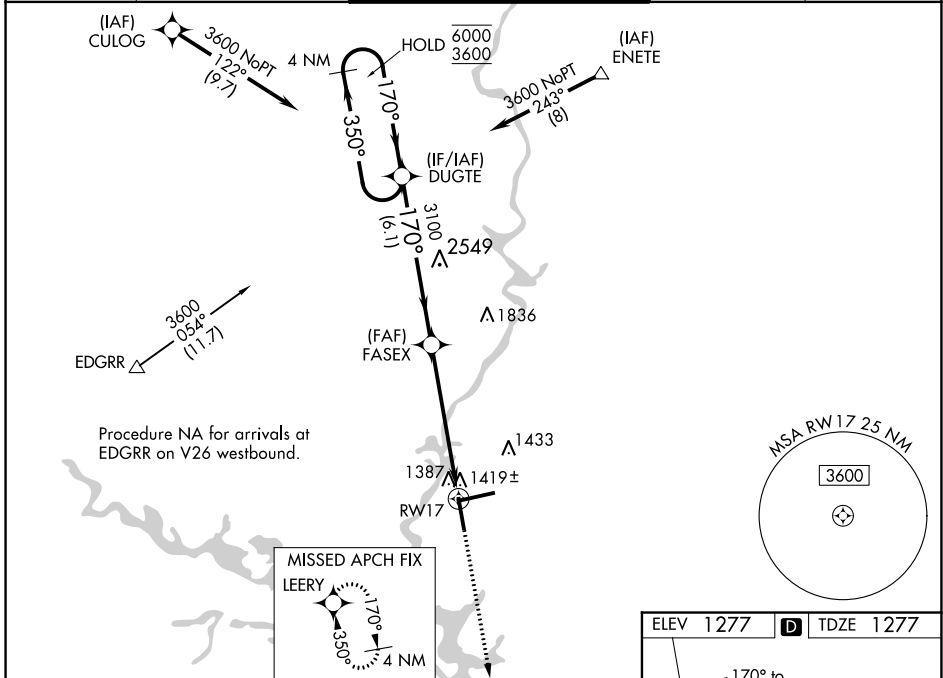
WAAS CH 53321 W17A	APP CRS 170°	Rwy Idg TDZE Apt Elev	6501 1277 1277
--	------------------------	-----------------------------	---

RNAV (GPS) RWY 17

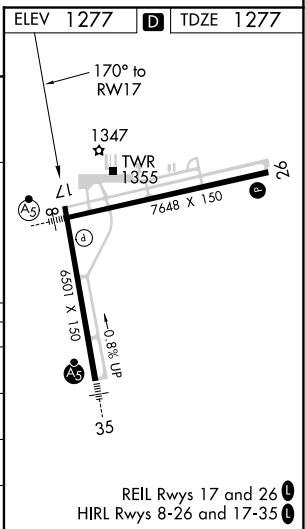
CENTRAL WISCONSIN (CWA)

RNP APCH.		MISSED APPROACH: Climb to 2900 direct LEERY and hold.
⚠ Rwy 17 helicopter visibility reduction below 3/4 SM NA. ⚠ For uncompensated Baro-VNAV systems, LNAV/VNAV NA below -17°C or above 54°C.		

ATIS 127.45	MINNEAPOLIS CENTER 124.4 317.7	CWA TOWER★ 119.75 (CTAF) 0 360.7	GND CON 121.9 360.7	UNICOM 122.95
-----------------------	--	--	-------------------------------	-------------------------



CATEGORY	A	B	C	D
LPV DA	1534-1		257 (300-1)	
LNAV/VNAV DA	1601-1 1/8		324 (400-1 1/8)	
LNAV MDA	1680-1	403 (500-1)	1680-1 1/8	403 (500-1 1/8)
CIRCLING	1740-1	463 (500-1)	1740-1 1/2	1840-2 563 (600-2)



EC-3, 25 FEB 2021 to 25 MAR 2021

EC-3, 25 FEB 2021 to 25 MAR 2021

REIL Rwy 17 and 26
HIRL Rwy 8-26 and 17-35