

WAAS CH 86729 W14A	APP CRS 144°	Rwy Idg TDZE Apt Elev	4200 701 708
--	------------------------	-----------------------------	---

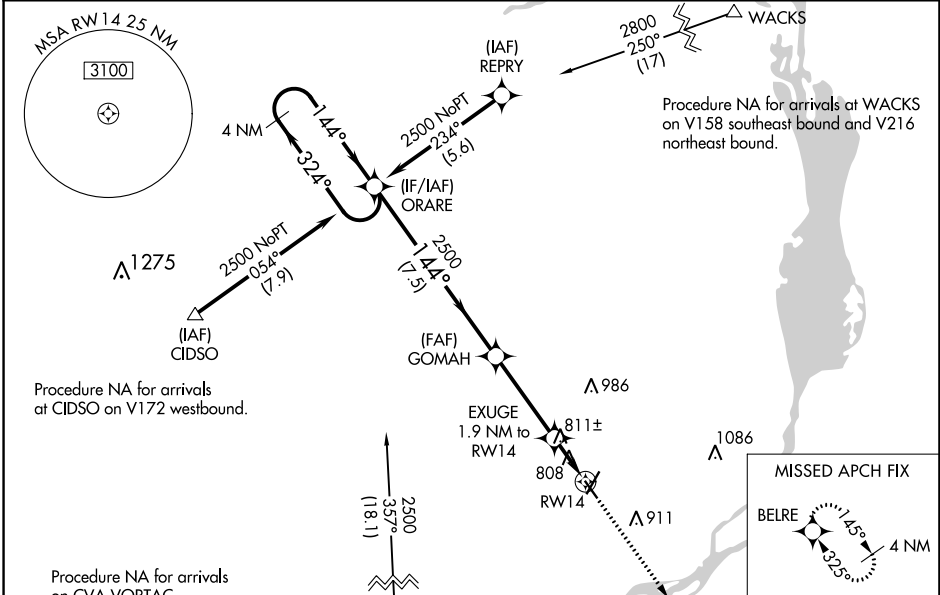
RNAV (GPS) RWY 14

CLINTON MUNI (CWI)

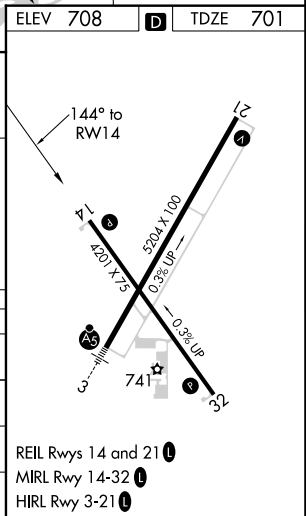
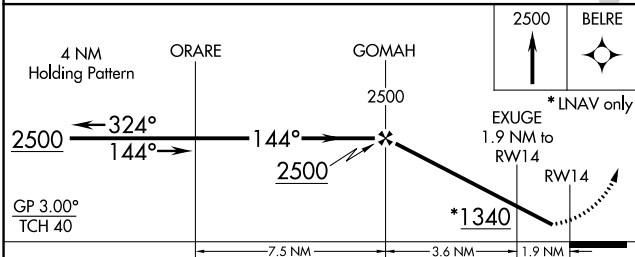
⚠ Rwy 14 helicopter visibility reduction below 3/4 SM NA. Baro-VNAV NA when using Davenport altimeter setting. For uncompensated Baro-VNAV systems, LNAV/VNAV NA below -16°C (4°F) or above 54°C (130°F). DME/DME RNP-0.3 NA. When local altimeter setting not received, use Davenport altimeter setting and increase all DA 47 feet and all MDA 60 feet; increase LNAV visibility Cat C 1/4 mile.

MISSED APPROACH:
Climb to 2500 direct BELRE and hold.

AWOS-3PT 125.525	QUAD CITY APP CON * 125.95 257.8	CLNC DEL 118.5 0	UNICOM 122.8 (CTAF)
----------------------------	--	----------------------------	-------------------------------



ELEV 708	D TDZE 701
----------	-------------------



CATEGORY	A	B	C	D
LPV DA		951-1 250 (300-1)		NA
LNAV/VNAV DA		968-1 267 (300-1)		NA
LNAV MDA		1080-1 379 (400-1)		NA
C CIRCLING	1140-1 432 (500-1)	1240-1 532 (600-1)	1240-1½ 532 (600-1½)	NA

NC-3, 25 FEB 2021 to 25 MAR 2021

NC-3, 25 FEB 2021 to 25 MAR 2021