

WAAS CH 69610 W03A	APP CRS 030°	Rwy Idg TDZE Apt Elev	5204 700 708
--	------------------------	-----------------------------	---

RNAV (GPS) RWY 3

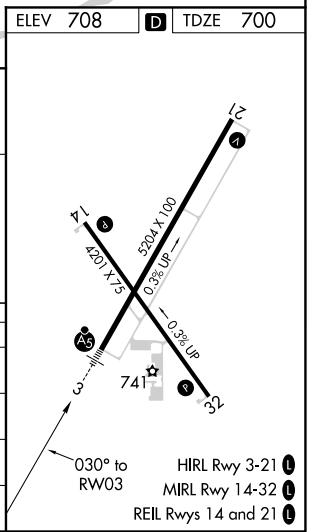
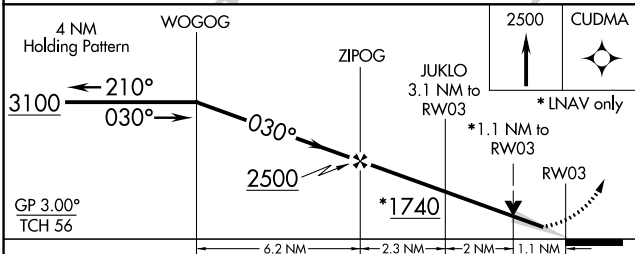
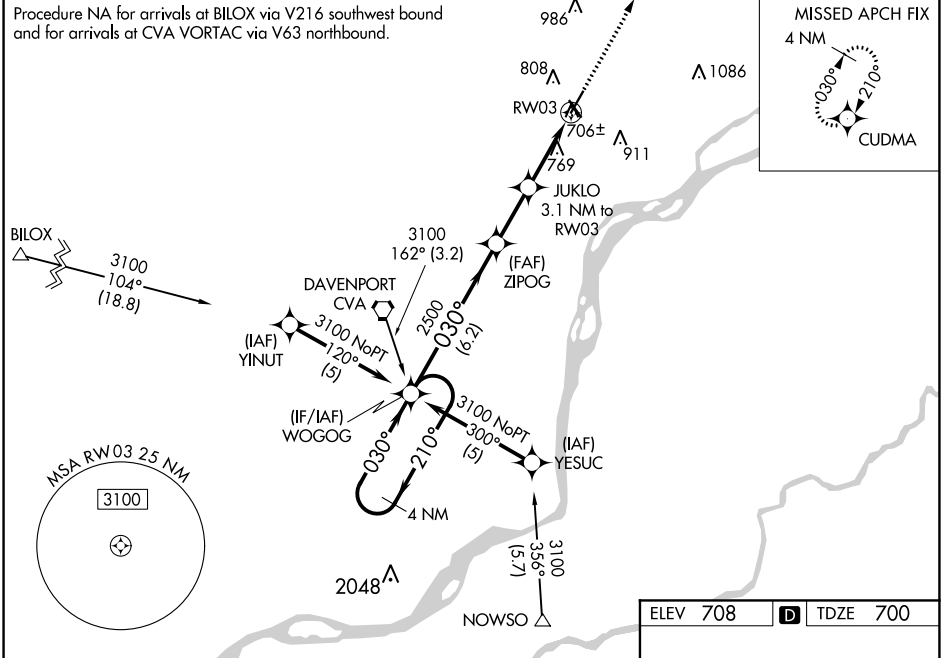
CLINTON MUNI (CWI)

▼ For uncompensated Baro-VNAV systems, LNAV/VNAV NA below -16°C (4°F) or above 54°C (130°F). DME/DME RNP-0.3 NA.
▲ Baro-VNAV and VDP NA when using Davenport altimeter setting.
☼ -35°C/-31°F When local altimeter setting not received, use Davenport altimeter setting and increase all DA 47 feet and all MDA 60 feet.

MALSR **A5**

MISSED APPROACH: Climb to 2500 direct CUDMA and hold.

AWOS-3PT 125.525	QUAD CITY APP CON * 125.95 257.8	CLNC DEL 118.5	UNICOM 122.8 (CTAF)
----------------------------	--	--------------------------	-------------------------------



CATEGORY	A	B	C	D
LPV DA	900-½	200 (200-½)		NA
LNAV/VNAV DA	1039-¾	339 (400-¾)		NA
LNAV MDA	1020-½	320 (400-½)		NA
C CIRCLING	1140-1 432 (500-1)	1240-1 532 (600-1)	1240-1½ 532 (600-1½)	NA

NC-3, 25 FEB 2021 to 25 MAR 2021

NC-3, 25 FEB 2021 to 25 MAR 2021