

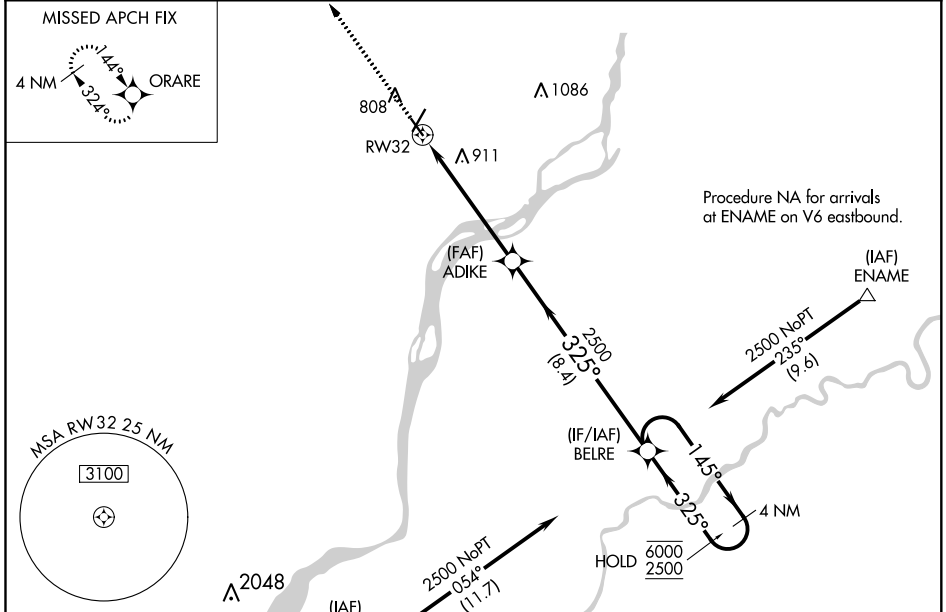
WAAS CH 77629 W32A	APP CRS 325°	Rwy Idg TDZE Apt Elev	4200 697 708
--	------------------------	-----------------------------	---

RNAV (GPS) RWY 32

CLINTON MUNI (CWI)

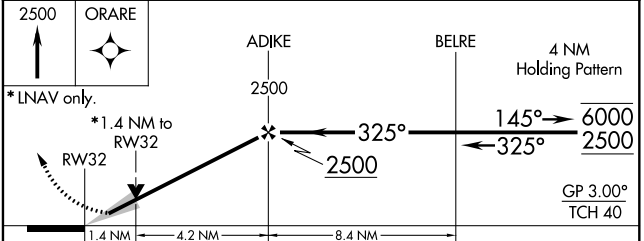
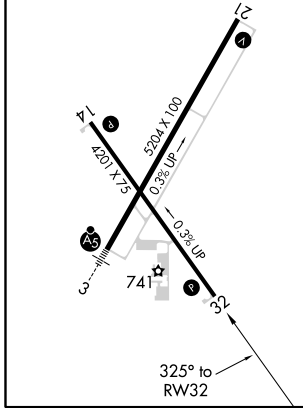
RNP APCH.	MISSED APPROACH: Climb to 2500 direct ORARE and hold.
<p>For uncompensated Baro-VNAV systems, LNAV/VNAV NA below -16°C or above 54°C. -35°C/-31°F</p>	

AWOS-3PT 125.525	QUAD CITY APP CON ★ 125.95 257.8	CLNC DEL 118.5 0	UNICOM 122.8 (CTAF)
----------------------------	--	----------------------------	-------------------------------



ELEV 708	D	TDZE 697
----------	----------	----------

REIL Rwys 14 and 21
MIRL Rwy 14-32
HIRL Rwy 3-21



CATEGORY	A	B	C	D
LPV DA	947-1 250 (300-1)			NA
LNAV/VNAV DA	1205-1 ³ / ₈ 508 (500-1 ³ / ₈)			NA
LNAV MDA	1180-1	483 (500-1)	1180-1 ³ / ₈ 483 (500-1 ³ / ₈)	NA
C CIRCLING	1180-1 472 (500-1)	1240-1 532 (600-1)	1240-1 ¹ / ₂ 532 (600-1 ¹ / ₂)	NA

NC-3, 25 FEB 2021 to 25 MAR 2021

NC-3, 25 FEB 2021 to 25 MAR 2021