

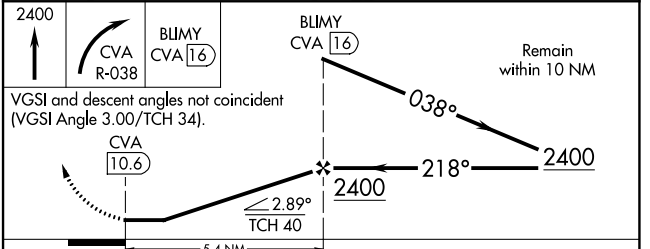
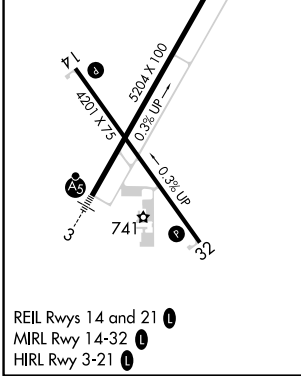
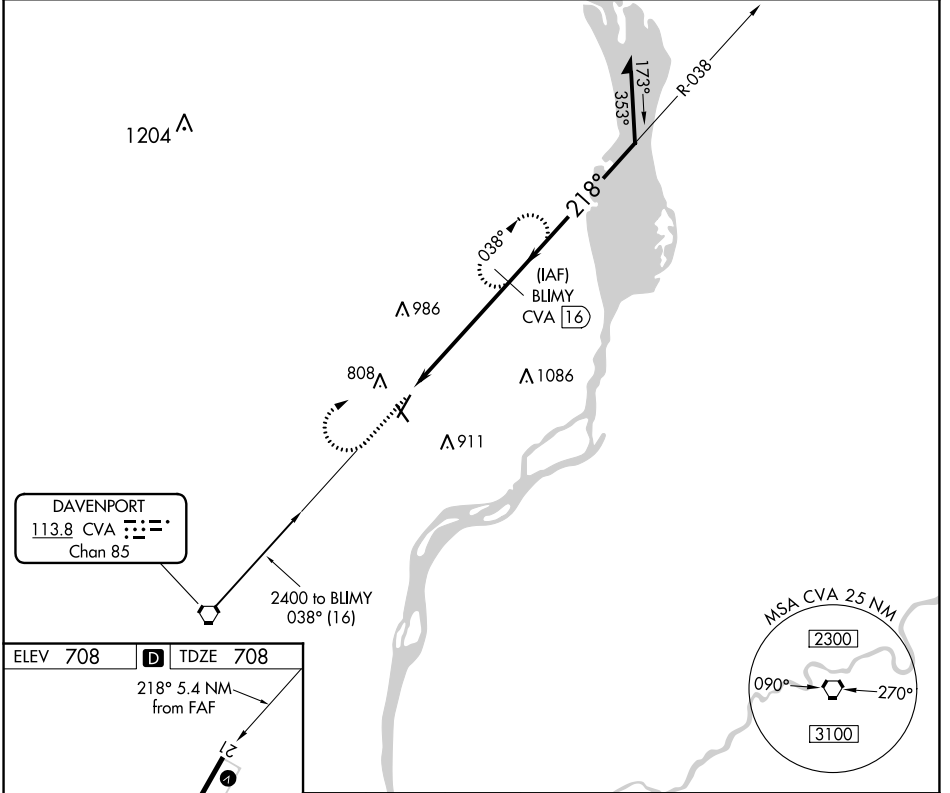
VORTAC CVA 113.8 Chan 85	APP CRS 218°	Rwy Idg TDZE Apt Elev	5204 708 708
---------------------------------------	------------------------	-----------------------------	---

VOR/DME RWY 21

CLINTON MUNI (CWI)

-35°C/-31°F	Rwy 21 helicopter visibility reduction below ¾ SM NA.	MISSED APPROACH: Climb to 2400 then right turn via R-038 to BLIMY 16 DME and hold.	
-------------	---	--	--

AWOS-3PT 125,525	QUAD CITY APP CON ★ 125.95 257.8	CLNC DEL 118.5 0	UNICOM 122.8 (CTAF)
----------------------------	--	----------------------------	-------------------------------



CATEGORY	A	B	C	D
S-21	1200-1	492 (500-1)	1200-1¼ 492 (500-1¼)	NA
CIRCLING	1200-1 492 (500-1)	1240-1 532 (600-1)	1240-1½ 532 (600-1½)	NA

NC-3, 25 FEB 2021 to 25 MAR 2021

NC-3, 25 FEB 2021 to 25 MAR 2021