

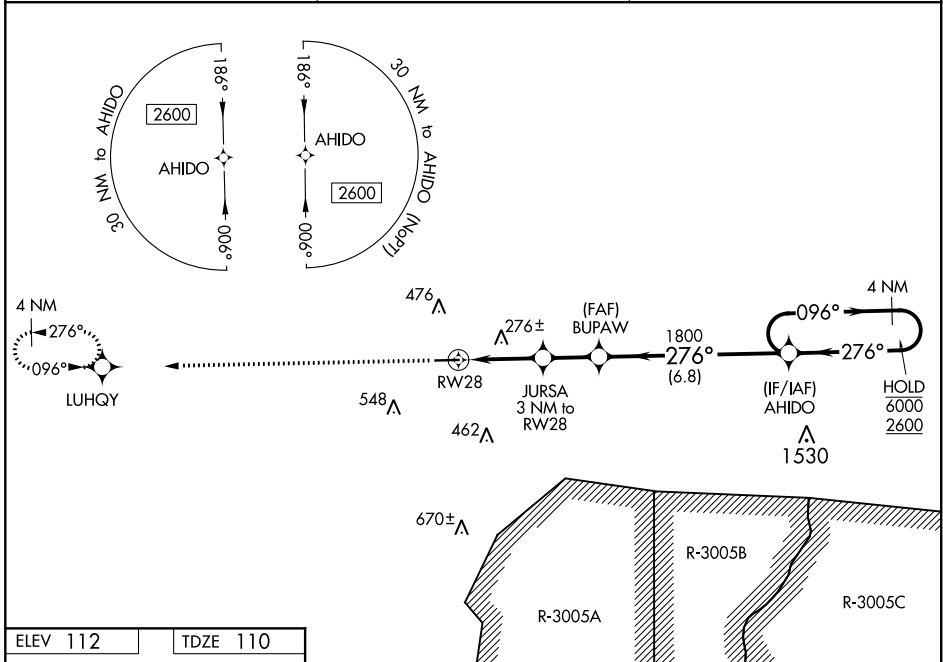
WAAS CH 87114 W28A	APP CRS 276°	Rwy Idg TDZE Apt Elev	5251 110 112
--	------------------------	-----------------------------	---

RNAV (GPS) RWY 28

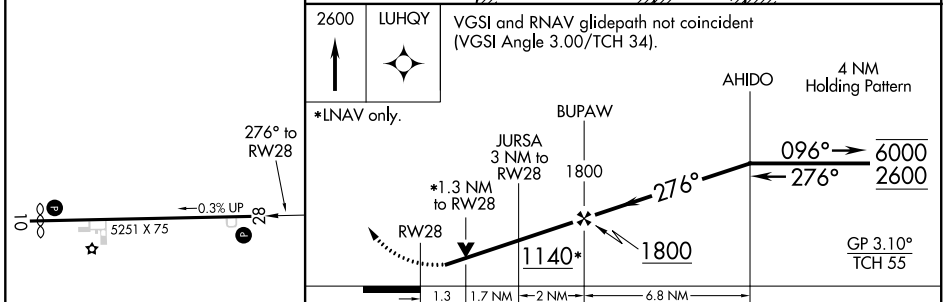
CLAXTON-EVANS COUNTY (C'WV)

RNP APCH.	MISSED APPROACH: Climb to 2600 direct LUHQY and hold.
<p>▼ Rwy 28 helicopter visibility reduction below 3/4 SM NA. ▲ For uncompensated Baro-VNAV systems, LNAV/VNAV NA below -15°C or above 54°C.</p>	

AWOS-3 120.075	JACKSONVILLE CENTER 132.925 363.2	UNICOM 122.8 (CTAF) 0
--------------------------	---	---------------------------------



ELEV 112	TDZE 110
----------	----------



2600 LUHQY	VGSi and RNAV glidepath not coincident (VGSi Angle 3.00/TCH 34).			
↑	*LNAV only.			
☆	AHIDO 4 NM Holding Pattern			
0.3% UP	GP 3.10° TCH 55			
5251 X 75				
MIRL Rwy 10-28 0	CIRCLING			
CATEGORY	A	B	C	D
LPV DA		386-1	276 (300-1)	
LNAV/VNAV DA		403-1	293 (300-1)	
LNAV MDA	540-1	430 (500-1)	540-1 1/4	430 (500-1 1/4)
CIRCLING	580-1 468 (500-1)	780-1 668 (700-1)	860-2 1/4 748 (800-1 1/4)	860-2 1/2 748 (800-2 1/2)

SE-4, 25 FEB 2021 to 25 MAR 2021

SE-4, 25 FEB 2021 to 25 MAR 2021