

(BLTWY6.BLTWY) 19115
BLTWY SIX DEPARTURE (RNAV)

CONROE-NORTH HOUSTON RGNL (CXO)
 AL-5573 (FAA) HOUSTON, TEXAS

ATIS
 118.325
 CLINC DEL
 120.45
 119.55 (when tower closed)
 GND CON
 120.45
 CONROE TOWER ★
 124.125 (CTAF)
 HOUSTON DEP CON
 119.7 281.4

**TOP ALTITUDE:
 ASSIGNED BY ATC**

NOTE: RADAR required.
 NOTE: DME/DME/IRU or GPS required.
 NOTE: RNAV 1.

TAKEOFF MINIMUMS

Rwys 1, 14, 19, 32:
 Standard with minimum climb of 500' per NM to 760.

DEPARTURE ROUTE DESCRIPTION

TAKEOFF RWY 1: Climb on heading 012° to 760 for RADAR vectors to DREMR, thence . . .

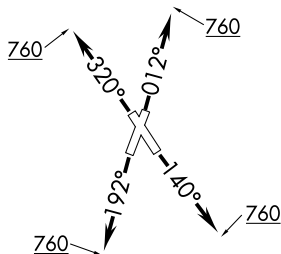
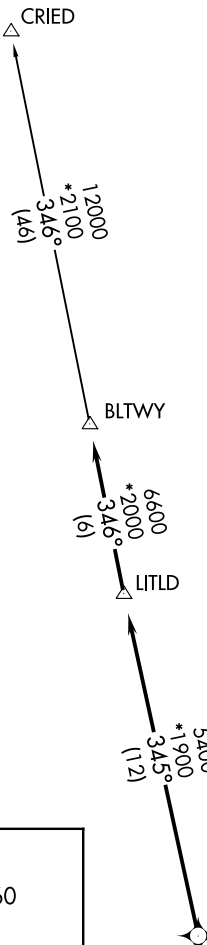
TAKEOFF RWY 14: Climb on heading 140° to 760 for RADAR vectors to DREMR, thence . . .

TAKEOFF RWY 19: Climb on heading 192° to 760 for RADAR vectors to DREMR, thence . . .

TAKEOFF RWY 32: Climb on heading 320° to 760 for RADAR vectors to DREMR, thence . . .

...on track 345° to LITLD, then on track 346° to BLTWY, then on (transition). Maintain ATC assigned altitude. Expect filed altitude 10 minutes after departure.

CRIED TRANSITION (BLTWY6.CRIED)



NOTE: Chart not to scale.

BLTWY SIX DEPARTURE (RNAV)
 (BLTWY6.BLTWY) 25APR19

HOUSTON, TEXAS
 CONROE-NORTH HOUSTON RGNL (CXO)

SC-5, 25 FEB 2021 to 25 MAR 2021

SC-5, 25 FEB 2021 to 25 MAR 2021