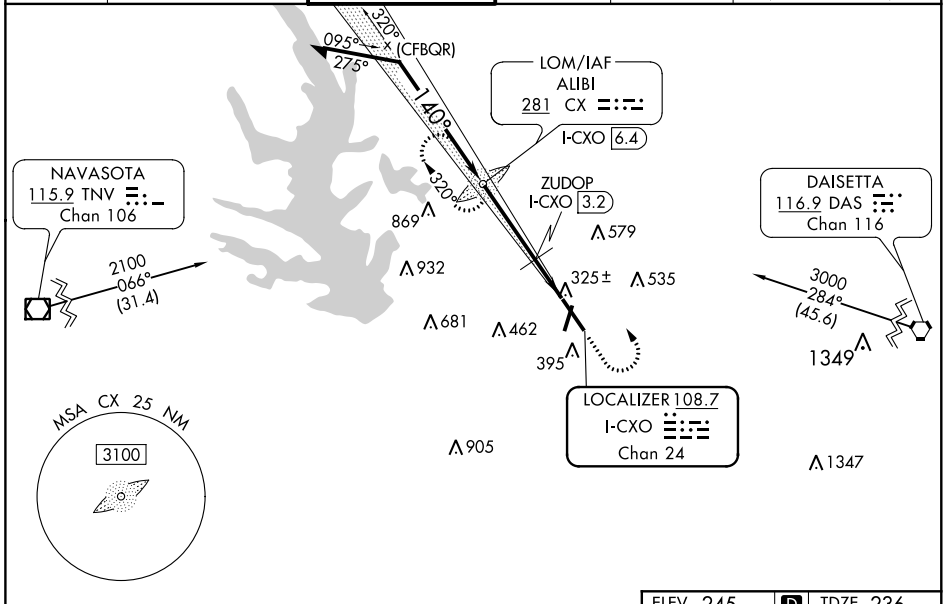


LOC/DME I-CXO 108.7 Chan 24	APP CRS 140°	Rwy Idg 7501 TDZE 236 Apt Elev 245
---	------------------------	---

ILS or LOC RWY 14

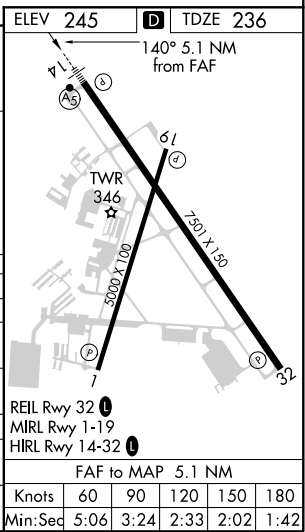
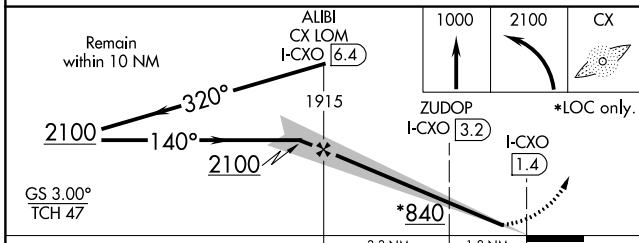
CONROE-NORTH HOUSTON RGNL (CXO)

ADF required.		MALSR		MISSED APPROACH: Climb to 1000 then climbing left turn to 2100 direct ALIBI LOM/I-CXO 6.4 DME and hold.	
ATIS 118.325	HOUSTON APP CON 119.7 281.4	CONROE TOWER ★ 124.125 (CTAF) 0	GND CON 120.45	CLNC DEL 120.45	CLNC DEL 119.55 (When twr closed)



SC-5, 25 FEB 2021 to 25 MAR 2021

SC-5, 25 FEB 2021 to 25 MAR 2021



CATEGORY	A	B	C	D
S-ILS 14	436-1/2 200 (200-1/2)			
S-LOC 14	840-1/2	604 (600-1/2)	840-1 3/8	604 (600-1 3/8)
CIRCLING	840-1	595 (600-1)	880-1 3/4	960-2 1/4
ZUDOP FIX MINIMUMS				
S-LOC 14	640-1/2	404 (400-1/2)	640-3/4	404 (400-3/4)
CIRCLING	700-1	455 (500-1)	880-1 3/4	960-2 1/4
			635 (700-1 3/4)	715 (800-2 1/4)