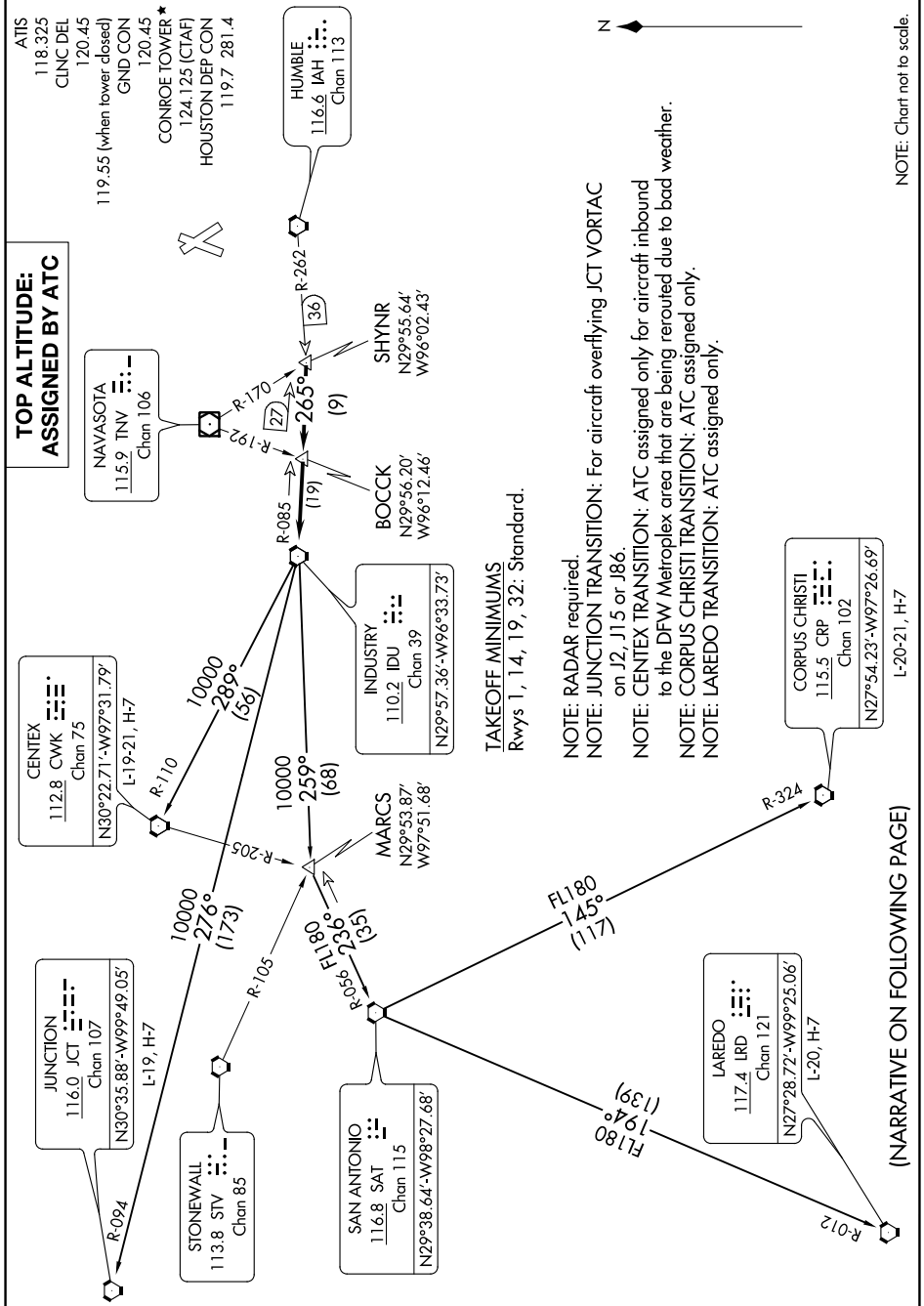


SC-5, 25 FEB 2021 to 25 MAR 2021



**TOP ALTITUDE:
ASSIGNED BY ATC**

NAVASOTA
115.9 TNV
Chan 106

JUNCTION
116.0 JCT
Chan 107

STONEWALL
113.8 STW
Chan 85

SAN ANTONIO
116.8 SAT
Chan 115

CENTEX
112.8 CWK
Chan 75

MARCS
N29°53.87'
W97°51.68'

BOCK
N29°56.20'
W96°12.46'

SHYNR
N29°55.64'
W96°02.43'

INDUSTRY
110.2 IDU
Chan 39

HUMBLE
116.6 IAH
Chan 113

CORPUS CHRISTI
115.5 CRP
Chan 102

ATIS
118.325
CLNC DEL
120.45
GND CON
CONROE TOWER
124.125 (CTAF)
HOUSTON DEP CON
119.7 281.4

TAKEOFF MINIMUMS
Rwys 1, 14, 19, 32: Standard.

NOTE: RADAR required.
NOTE: JUNCTION TRANSITION: For aircraft overflying JCT VORTAC on J2, J15 or J86.
NOTE: CENTEX TRANSITION: ATC assigned only for aircraft inbound to the DFW Metroplex area that are being rerouted due to bad weather.
NOTE: CORPUS CHRISTI TRANSITION: ATC assigned only.
NOTE: LAREDO TRANSITION: ATC assigned only.

NOTE: Chart not to scale.

(NARRATIVE ON FOLLOWING PAGE)

SC-5, 25 FEB 2021 to 25 MAR 2021