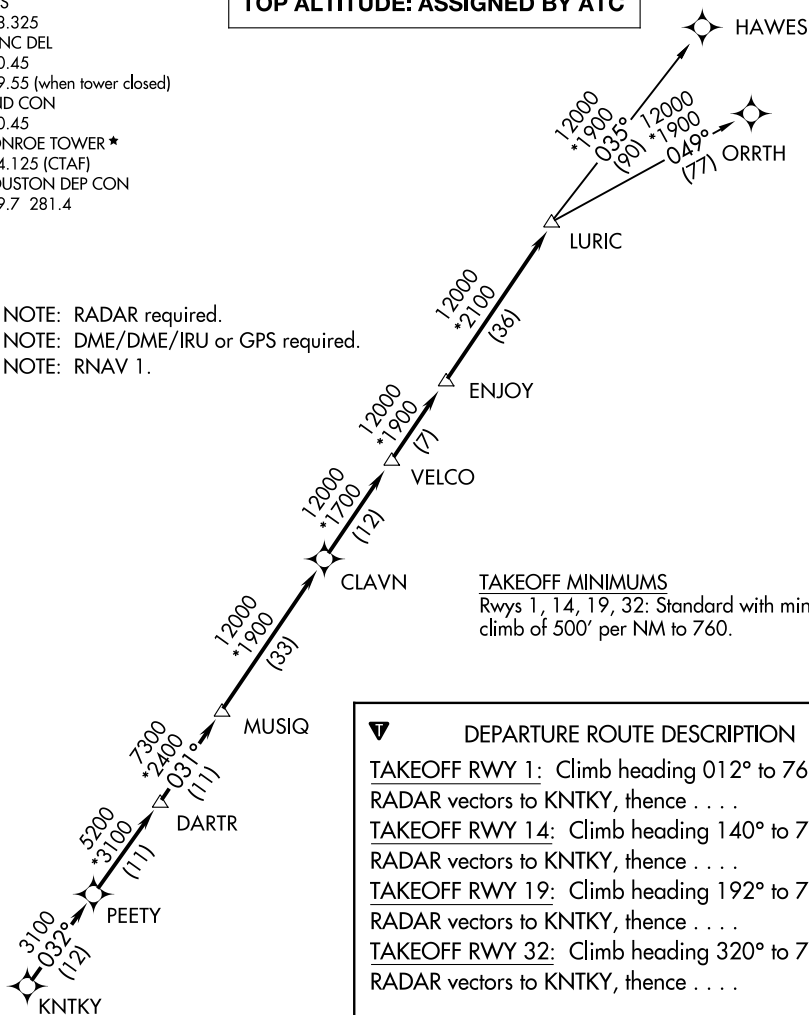


LURIC SEVEN DEPARTURE (RNAV)

ATIS
 118.325
 CLINC DEL
 120.45
 119.55 (when tower closed)
 GND CON
 120.45
 CONROE TOWER *
 124.125 (CTAF)
 HOUSTON DEP CON
 119.7 281.4

TOP ALTITUDE: ASSIGNED BY ATC

NOTE: RADAR required.
 NOTE: DME/DME/IRU or GPS required.
 NOTE: RNAV 1.



TAKEOFF MINIMUMS

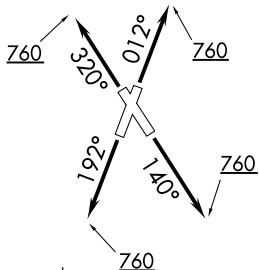
Rwys 1, 14, 19, 32: Standard with minimum climb of 500' per NM to 760.

DEPARTURE ROUTE DESCRIPTION

- TAKEOFF RWY 1:** Climb heading 012° to 760 for RADAR vectors to KNTKY, thence . . .
- TAKEOFF RWY 14:** Climb heading 140° to 760 for RADAR vectors to KNTKY, thence . . .
- TAKEOFF RWY 19:** Climb heading 192° to 760 for RADAR vectors to KNTKY, thence . . .
- TAKEOFF RWY 32:** Climb heading 320° to 760 for RADAR vectors to KNTKY, thence . . .

. . . on track 032° to PEETY, then on track 032° to DARTR, then on track 031° to MUSIQ, then on track 031° to CLAVN, then on track 031° to VELCO, then on track 031° to ENJOY, then on track 031° to LURIC, then on (transition). Maintain ATC assigned altitude. Expect filed altitude 10 minutes after departure.

HAWES TRANSITION (LURIC7.HAWES)
ORRTH TRANSITION (LURIC7.ORRTH)



NOTE: Chart not to scale.

SC-5, 25 FEB 2021 to 25 MAR 2021

SC-5, 25 FEB 2021 to 25 MAR 2021