

WAAS CH 86719	APP CRS 012°	Rwy Idg TDZE Apt Elev	5000 237 245
W01A			

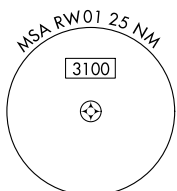
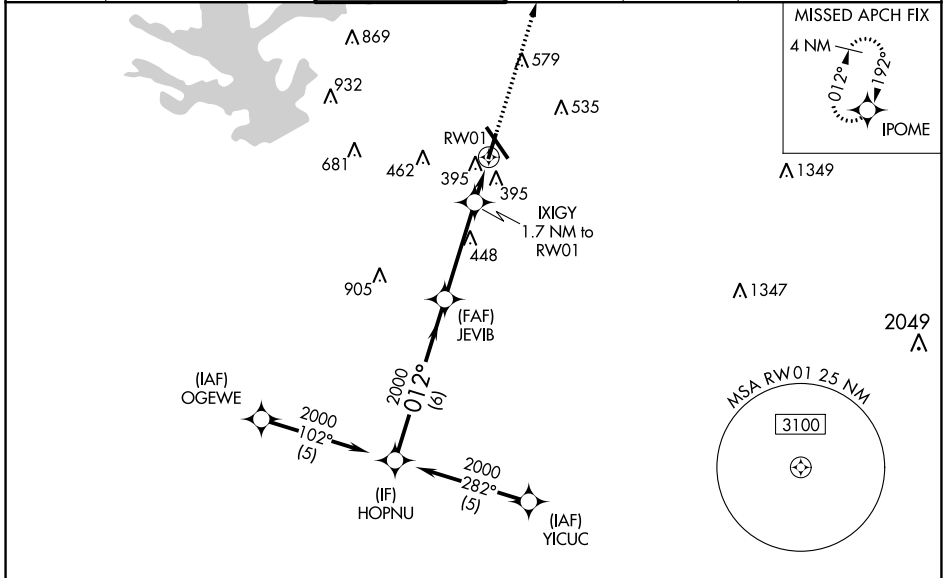
RNAV (GPS) RWY 1

CONROE-NORTH HOUSTON RGNL (CˆXO)

▽ For uncompensated Baro-VNAV systems, LNAV/VNAV NA below -15°C (5°F) or above 48°C (118°F). DME/DME RNP-0.3 NA.
⚠ Rwy 1 helicopter visibility reduction below ¾ SM NA.

MISSED APPROACH: Climb to 2000 direct IPOME and hold.

ATIS 118.325	HOUSTON APP CON 119.7 281.4	CONROE TOWER * 124.125 (CTAF) 0	GND CON 120.45	CLNC DEL 120.45	CLNC DEL 119.55 (When twr closed)
------------------------	---------------------------------------	---	--------------------------	---------------------------	--



SC-5, 25 FEB 2021 to 25 MAR 2021

SC-5, 25 FEB 2021 to 25 MAR 2021

ELEV	245	D	TDZE	237
GP 3.00° TCH 49				
CATEGORY	A	B	C	D
LPV DA	521-1		284 (300-1)	
LNAV/VNAV DA	651-1½		414 (500-1½)	
LNAV MDA	660-1 423 (500-1)		660-1¼ 423 (500-1¼)	
C CIRCLING	700-1 455 (500-1)		880-1¾ 635 (700-1¾) 960-2¼ 715 (800-2¼)	

