


WAAS CH <b>99512</b> <b>W14A</b>	APP CRS <b>140°</b>	Rwy Idg TDZE <b>7501</b> <b>236</b> Apt Elev <b>245</b>
--	------------------------	---

# RNAV (GPS) RWY 14

## CONROE-NORTH HOUSTON RGNL (C̄X̄O)

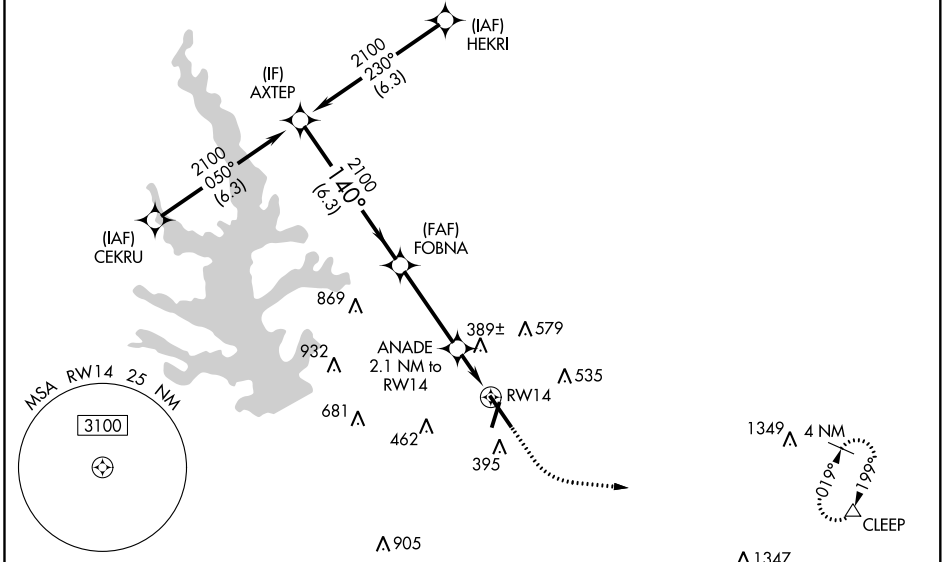
**⚠** For uncompensated Baro-VNAV systems, LNAV/VNAV NA below -6°C (-22°F) or above 54°C (130°F). DME/DME RNP-0.3 NA.

MALSRL

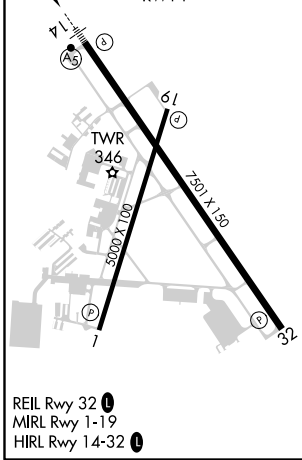


**MISSED APPROACH:** Climb to 700 then climbing left turn to 3100 direct CLEEP and hold.

ATIS <b>118.325</b>	HOUSTON APP CON <b>119.7 281.4</b>	<b>CONROE TOWER ★</b> <b>124.125 (CTAF) 0</b>	GND CON <b>120.45</b>	CLNC DEL <b>120.45</b>	CLNC DEL <b>119.55</b> (When twr closed)
------------------------	---------------------------------------	--	--------------------------	---------------------------	--



ELEV <b>245</b>	<b>D</b> TDZE <b>236</b>
-----------------	--------------------------



	700	3100	CLEEP		
AXTEP	2100	140°	2100	FOBNA 2100	ANADE 2.1 NM to RW14
GP 3.00° TCH 47	2100	140°	*940	*1.1 NM to RW14	RW14
6.3 NM	3.6 NM	1 NM	1.1 NM	*LNAV only.	
CATEGORY	A	B	C	D	
LPV DA		436-½	200 (200-½)		
LNAV/VNAV DA		521-½	285 (300-½)		
LNAV MDA	640-½	404 (400-½)	640-⅝	404 (400-⅝)	
<b>C</b> CIRCLING	700-1	455 (500-1)	880-1¾ 635 (700-1¾)	960-2¼ 715 (800-2¼)	

SC-5, 25 FEB 2021 to 25 MAR 2021

SC-5, 25 FEB 2021 to 25 MAR 2021