

WAAS CH <b>90219</b> <b>W19A</b>	APP CRS <b>192°</b>	Rwy Idg TDZE Apt Elev	<b>5000</b> <b>237</b> <b>245</b>
--	------------------------	-----------------------------	---

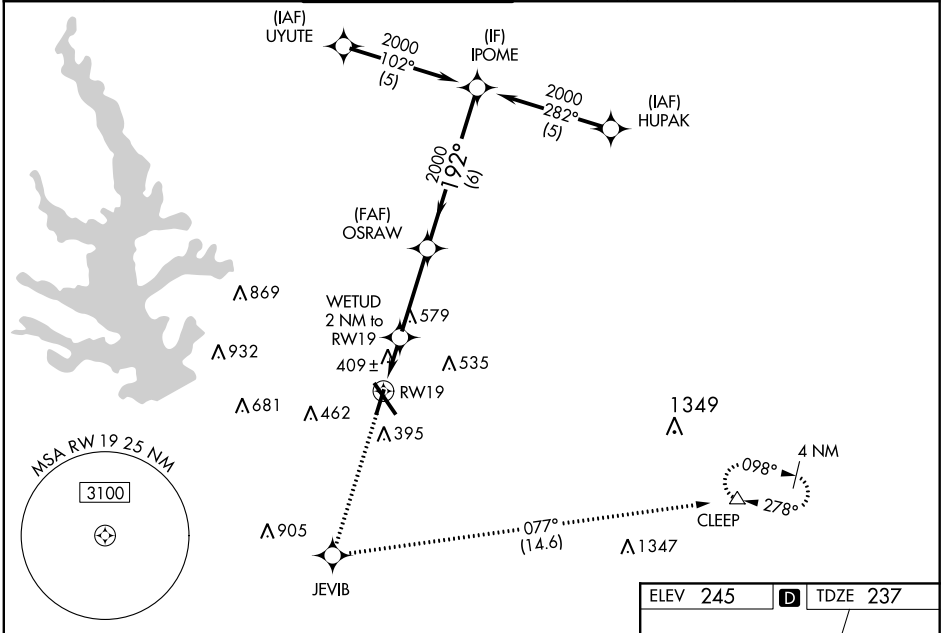
# RNAV (GPS) RWY 19

CONROE-NORTH HOUSTON RGNL (C̄X̄O)

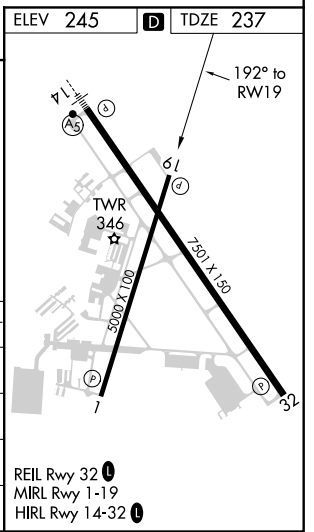
**▼** For uncompensated Baro-VNAV systems, LNAV/VNAV NA below -1.5°C (5°F) or above 48°C (118°F). DME/DME RNP-0.3 NA.  
**▲** Rwy 19 helicopter visibility reduction below ¾ SM NA.

MISSED APPROACH: Climb to 3100 direct JEVIB and left turn on track 077° to CLEEP and hold.

ATIS <b>118.325</b>	HOUSTON APP CON <b>119.7 281.4</b>	CONROE TOWER * <b>124.125 (CTAF)</b>	GND CON <b>120.45</b>	CLNC DEL <b>120.45</b>	CLNC DEL <b>119.55</b> (When twr closed)
------------------------	---------------------------------------	---	--------------------------	---------------------------	--



3100	JEVIB	CLEEP		
↑	✦	↪	tr 077°	
*LNAV only.				
RW19		WETUD 2 NM to RW19	OSRAW 2000	IPOME 2000
*1.2 NM to RW19		*900	2000	GP 3.00° TCH 49
1.2 NM		0.8 NM	3.3 NM	6 NM
CATEGORY	A	B	C	D
LPV DA	527-1		290 (300-1)	
LNAV/VNAV DA	682-1½		445 (500-1½)	
LNAV MDA	660-1 423 (500-1)		660-1¼ 423 (500-1¼)	
CIRCLING	700-1 455 (500-1)		880-1¾ 635 (700-1¾) 960-2¼ 715 (800-2¼)	



SC-5, 25 FEB 2021 to 25 MAR 2021

SC-5, 25 FEB 2021 to 25 MAR 2021