

WAAS CH 86233 W26A	APP CRS 264°	Rwy Idg TDZE 176 Apt Elev 176	5004
--	------------------------	---	-------------

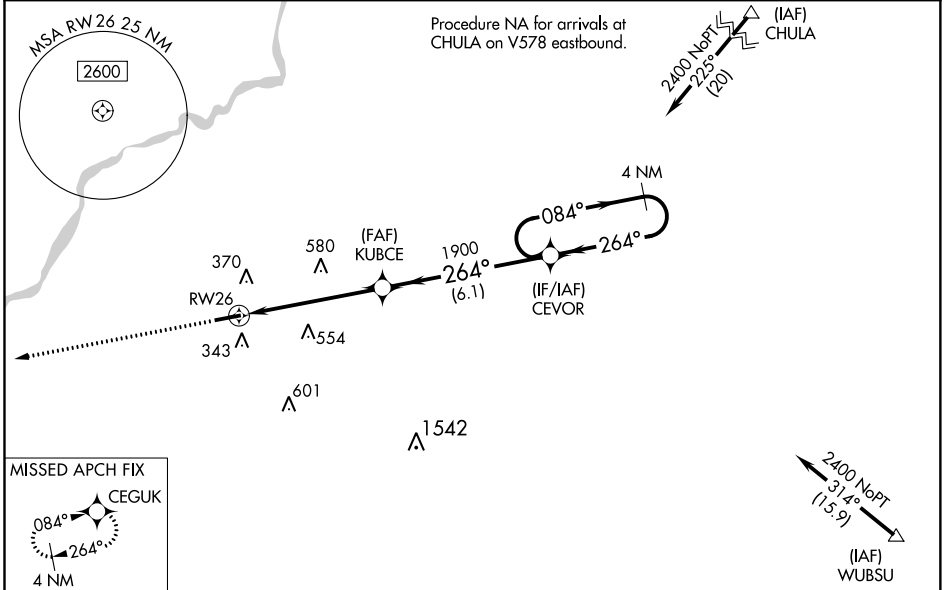
RNAV (GPS) RWY 26

CAMILLA-MITCHELL COUNTY (CXU)

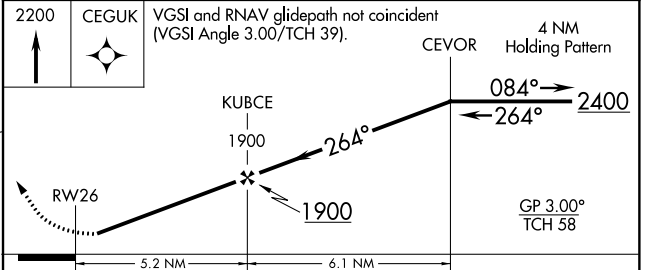
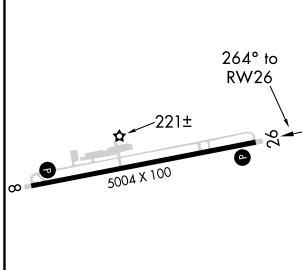
NA Baro-VNAV NA when using Albany altimeter setting. For uncompensated Baro-VNAV systems, LNAV/VNAV NA below -15°C (5°F) or above 54°C (130°F). DME/DME RNP-0.3 NA. When local altimeter setting not received, use Albany altimeter setting and increase all DA 48 feet and all MDA 60 feet; increase visibility LPV all Cats and LNAV Cats C and D and Circling Cat C ¼ mile and LNAV/VNAV all Cats ½ mile. Helicopter visibility reduction below 1 SM NA. Rwy 26 Straight-in and Circling minimums NA at night.

MISSED APPROACH:
Climb to 2200 direct CEGUK and hold.

AWOS-3T 118.675	JACKSONVILLE CENTER 125.75 226.8	UNICOM 122.8 (CTAF)
---------------------------	--	-------------------------------



ELEV 176	TDZE 176
----------	----------



CATEGORY	A	B	C	D
LPV DA		505-1	329 (400-1)	
LNAV/VNAV DA		553-1¼	377 (400-1¼)	
LNAV MDA	660-1	484 (500-1)	660-1⅓ 484 (500-1⅓)	
CIRCLING	720-1	544 (600-1)	720-1½ 544 (600-1½)	760-2 584 (600-2)

SE-4, 25 FEB 2021 to 25 MAR 2021

SE-4, 25 FEB 2021 to 25 MAR 2021