


LOC I-CXY 109.1	APP CRS 082°	Rwy Idg TDZE Apt Elev	5000 342 347
---------------------------	------------------------	-----------------------------	---

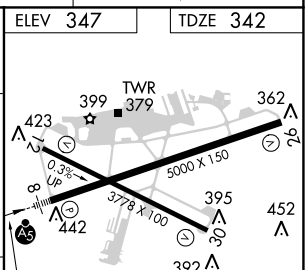
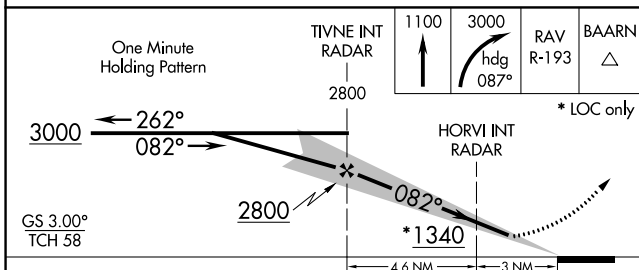
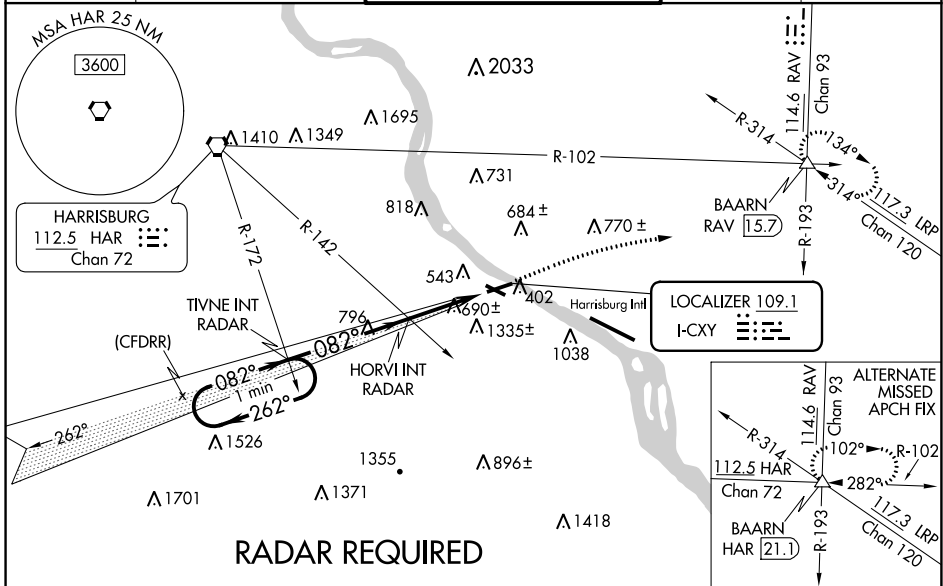
ILS or LOC RWY 8



CAPITAL CITY (CXY)

⚠ When local altimeter setting not received, use Harrisburg Intl altimeter setting. For inop MALS, increase S-ILS-8 all Cats visibility to 1¼ mile and S-LOC-8 Cat A and HORVI FIX minimums Cat A and B visibility to 1 mile. Night landing Rwy 12, 30 NA. Helicopter visibility reduction below ¾ SM NA.

MALS  MISSED APPROACH: Climb to 1100 then climbing right turn to 3000 on heading 087° and on RAV VORTAC R-193 to BAARN INT/RAV 15.7 DME and hold.

ATIS 134.95	HARRISBURG APP CON 124.1 273.525	CAPITAL CITY TOWER * 119.5 (CTAF) 0 257.8	GND CON 121.9	UNICOM 122.95
-----------------------	--	---	-------------------------	-------------------------



CATEGORY	A	B	C	D
S-ILS 8		834-1¼	492 (500-1¼)	
S-LOC 8	1340-1	1005 (1000-1)	1340-2½	1005 (1000-2½)
 CIRCLING	1340-1¼ 993 (1000-1¼)	1700-1½ 1353 (1400-1½)	1700-3	1353 (1400-3)
HORVI FIX MINIMUMS				
S-LOC 8	940-1	605 (600-1)	940-1¾	605 (600-1¾)
 CIRCLING	1200-1¼ 853 (900-1¼)	1700-1½ 1353 (1400-1½)	1700-3	1353 (1400-3)

082° 7.6 NM from FAF

REIL Rws 12 and 30
HIRL Rws 8-26
MIRL Rwy 12-30

FAF to MAP 7.6 NM

Knots	60	90	120	150	180
Min:Sec	7:36	5:04	3:48	3:02	2:32

NE-4, 25 FEB 2021 to 25 MAR 2021

NE-4, 25 FEB 2021 to 25 MAR 2021