

WAAS CH 93707 W13A	APP CRS 130°	Rwy Idg 5000 TDZE 2503 Apt Elev 2503
--	------------------------	---

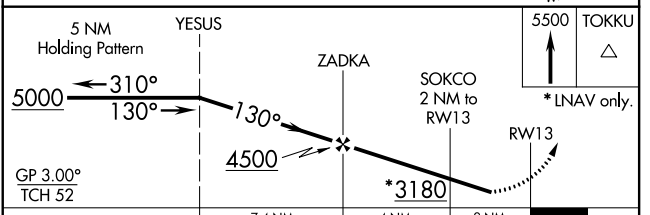
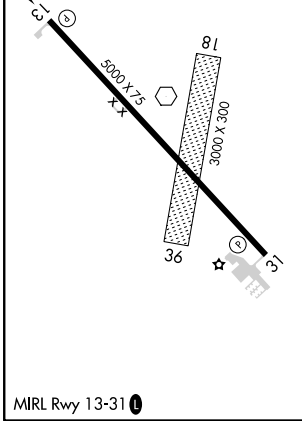
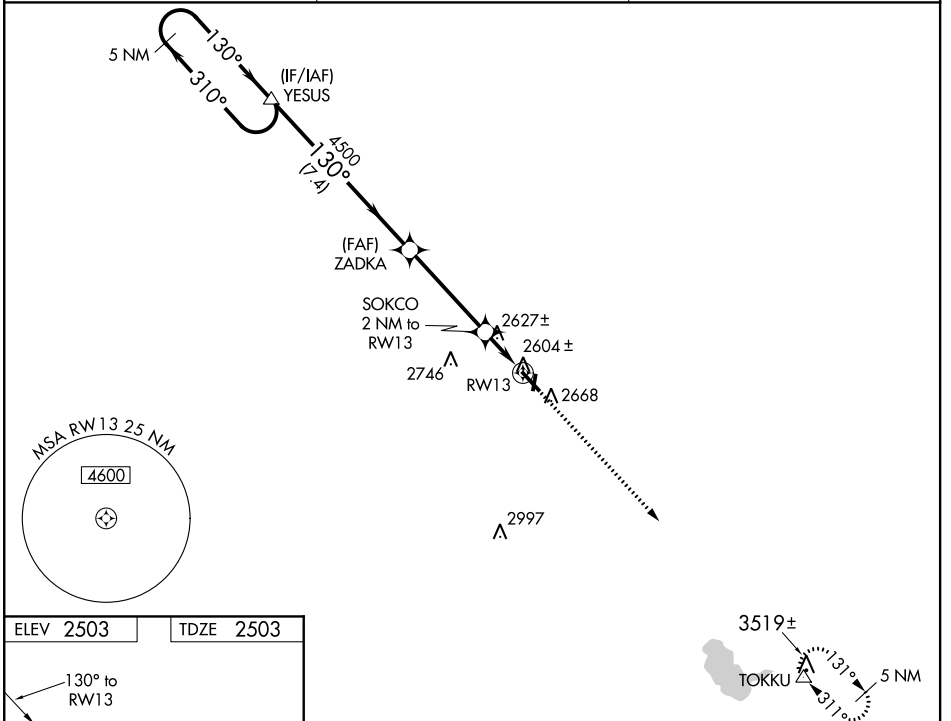
RNAV (GPS) RWY 13

COZAD MUNI (CZD)

⚠ NA Circling NA to Rwy 18 and 36. Baro-VNAV NA. DME/DME RNP-0.3 NA.
 Use Lexington altimeter setting; when not received, use North Platte altimeter setting and increase all DAs 79 feet and LPV and LNAV/VNAV visibility ¼ mile all Cats, increase all MDAs 80 feet and Circling Cat C visibility ¼ mile. Helicopter visibility reduction below ¾ SM NA.

MISSED APPROACH: Climb to 5500 direct TOKKU and hold.

LXN AWOS-3 121.025	DENVER CENTER 132.7 226.675	UNICOM 122.8 (CTAF) 0
------------------------------	---------------------------------------	---------------------------------



CATEGORY	A	B	C	D
LPV DA	2875-1¼ 372 (400-1¼)			NA
LNAV/VNAV DA	2913-1½ 410 (500-1½)			NA
LNAV MDA	2920-1	417 (500-1)	2920-1¼ 417 (500-1¼)	NA
C CIRCLING	3080-1	577 (600-1)	3140-1¾ 637 (700-1¾)	NA

NC-2, 25 FEB 2021 to 25 MAR 2021

NC-2, 25 FEB 2021 to 25 MAR 2021