

WAAS CH 82133 W13A	APP CRS 127°	Rwy Idg 5003 TDZE 598 Apt Elev 598
--	------------------------	---

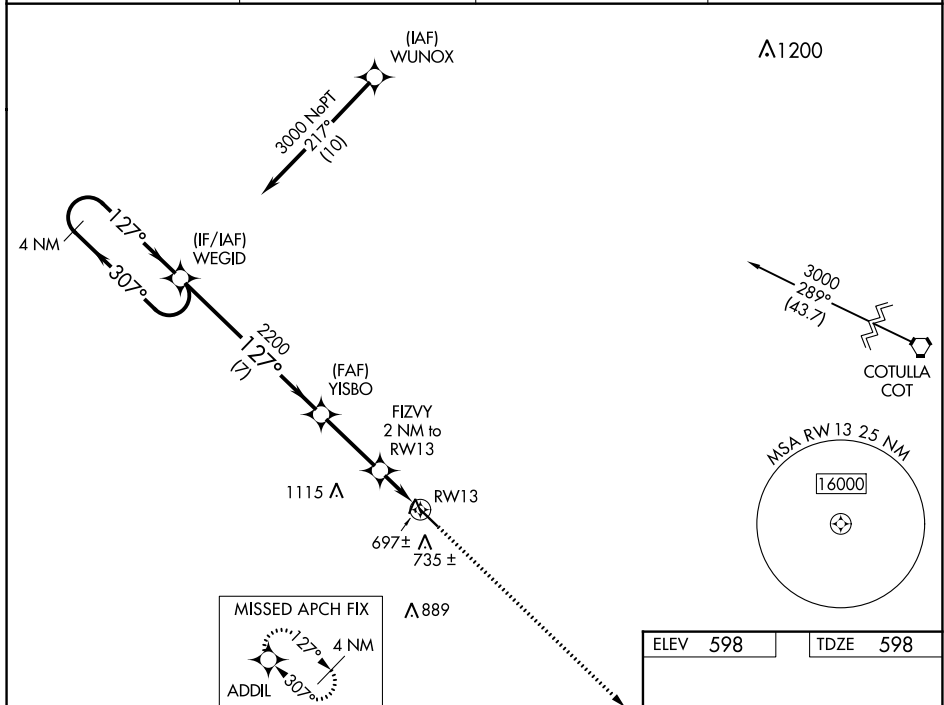
RNAV (GPS) RWY 13

DIMITT COUNTY (CZT)

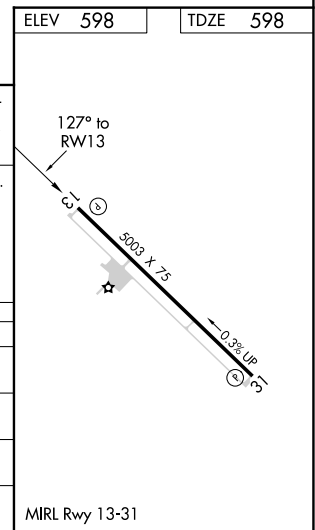
V Baro-VNAV NA. DME/DME RNP-0.3 NA. Use Cotulla altimeter setting; when not received use Uvalde altimeter setting and increase all DA 52 feet, all MDA 60 feet and increase LPV all Cats, LNAV/VNAV all Cats, and Circling Cat C visibility ¼ mile. Helicopter visibility reduction below ¾ SM NA.

NA MISSED APPROACH: Climb to 3000 direct ADDIL and hold.

AWOS-3 119.625	COT ASOS 118.325	HOUSTON CENTER 127.8 307.5	UNICOM 122.8 (CTAF)
--------------------------	----------------------------	--------------------------------------	-------------------------------



4 NM Holding Pattern WEGID		3000	ADDIL	
<p>GP 3.00° TCH 40</p> <p>3000 ← 307° → 127° → 2200</p>		2200	*LNAV only.	
<p>YISBO</p> <p>FIZVY 2 NM to RWY 13</p> <p>RWY 13</p>		*1260		
<p>7 NM</p> <p>2.9 NM</p> <p>2 NM</p>				
CATEGORY	A	B	C	D
LPV DA	940-1½	342 (400-1½)		NA
LNAV/VNAV DA	940-1½	342 (400-1½)		NA
LNAV MDA	1040-1	442 (500-1)	1040-1½ 442 (500-1½)	NA
C CIRCLING	1160-1 562 (600-1)	1240-1 642 (700-1)	1500-2¾ 902 (1000-2¾)	NA



SC-3, 25 FEB 2021 to 25 MAR 2021

SC-3, 25 FEB 2021 to 25 MAR 2021

MIRL Rwy 13-31